

Side-Mount Wall Mount Cabinets



Greater Stability

[The Edge-Series Side-Mount Wall Mount Cabinets](#) secure rackmount servers, UPS's, network switches and devices commonly found in PoE, IoT and edge-computing applications. The heavy-duty, side-mount cabinet supports large IT equipment in a secure, wall mount configuration while offering full access for maintenance. A wide range of high-density accessories allow the equipment to be installed in a compact environment and maintain proper cable and airflow management.



Benefits

Supports Larger Equipment	110kg load rating and 920mm depth suitable for large IT equipment
Reliable Operation	Fully-assembled, welded frame provides greater support
Greater Security	Locking doors and side panel prevent unauthorized access
Maximum Organization	High density cable management for organizing network and power cables
Office Friendly	Attractive design and low-noise fans suitable for conference rooms and offices
Greater Access	Removable side panel and doors for simplified maintenance
Greater Airflow	High-capacity fans and isolation accessories support higher-powered equipment
Flexible Mounting	Wall mounting kit, castors and mounting feet to place on the wall, floor or desktop
Greater RMU Capacity	OU device mounting for small equipment without consuming RMU

Greater Capacity	Greater Security	Best-in-Class Organization
------------------	------------------	----------------------------



Max Equipment Mounting Depth and Load Rating



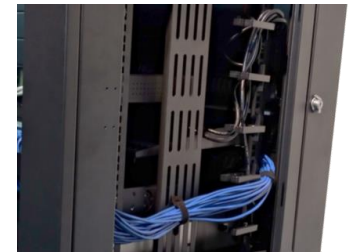
Max Airflow for High-Power Equipment



Locking Door and Side Panels



Secure Wall Mounting



Revi-Ring™ Cable Management



OU Equipment Mounting

Side-Mount Wall Mount Cabinets

Specifications



Cabinets

Part No.	Description
ATSMC9612S	Side-Mount Wall Mount Cabinet, 12U x 920mmW x 625mmD, 110kg, Glass Doors, Solid Side
ATSMC9612V	Side-Mount Wall Mount Cabinet, 12U x 920mmW x 625mmD, 110kg, Glass Doors, Vented Side
ATSMC9618S	Side-Mount Wall Mount Cabinet, 18U x 920mmW x 625mmD, 110kg, Glass Doors, Solid Side
ATSMC9618V	Side-Mount Wall Mount Cabinet, 18U x 920mmW x 625mmD, 110kg, Glass Doors, Vented Side

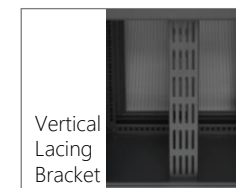
- Welded frame cabinet with 110kg load rating
- 2 x glass doors with full locking swing handle
- 1 x vented or solid locking and removable side panels
- 4 x EIA adjustable mounting rails
- Wall mounting kit (pack of 6) and ground wires
- 2 x cable entry brush and grommet (top and bottom)
- Pack of 50 M6 screws and cage nuts
- Black powder coat paint (RAL9005)
- Carton packaging
- 1-Year manufacturer's warranty

Accessories

	Part No.	Description	Packaging	ATSMC9612()	ATSMC9618()
Cable Management	ATREVRING9	Revi-Ring™ Vertical D-Ring Cable Manager (9U)	Pack of 2		Order 2 Sets
	ATREVRING12	Revi-Ring™ Vertical D-Ring Cable Manager (12U)	Pack of 2	•	
	ATVLB12	Vertical Lacing Bracket (12U)	Pack of 2	•	
	ATVLB18	Vertical Lacing Bracket (18U)	Pack of 2		•
	ATHCM1	Horizontal Cable Manager, 1U	1	•	•
	ATHDRM1	Horizontal D-Ring Manager, 1U	1	•	•
	ATHBRSH1	Horizontal Brush Panel, 1U	1	•	•
	ATCEBRSH	Cable Entry Brush Strip	1	Included	Included
	ATCEGROM	Cable Entry Grommet	1	Included	Included
	ATHLB	Horizontal Lacing Bar	1	•	•
ATVELCRO	Velcro Straps	Pack of 20	•	•	
Airflow	ATLNAN220	Low Noise Fan, 220V	Pack of 2	•	•
	ATSTFAN220	Standard Fan, 220V	Pack of 2	•	•
	ATMBLANK1	Metal Blanking Panel (1U)	1	•	•
	ATPBLANK1	Plastic Tool-less Blanking Panel (2U)	1	•	•
	ATLESHLF	Light Equipment Shelf	1	•	•
Other	ATFSHELF350	Fixed Shelf, 350mmD	1	•	•
	ATFSHELF550	Fixed Shelf, 550mmD	1	•	•
	ATSSHELF350	Sliding Shelf, 350mmD	1	•	•
	ATSSHELF550	Sliding Shelf, 550mmD	1	•	•
	ATLEDLIGHT	LED Light	1	•	•
	AT2CASTOR	2" Castors (2 w brake, 2 w/o brake)	Pack of 4	•	•
	ATMTFEET	Mounting Feet	Pack of 4	•	•



Revi-Ring™



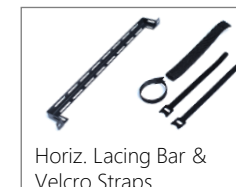
Vertical Lacing Bracket



Brush and Grommet



Horiz. Cable Managers



Horiz. Lacing Bar & Velcro Straps



Blanking Panels



Low-Noise Fans



Light Equipment Shelf



LED Light