



# OWNER'S MANUAL

---

## EDGE-SERIES CABINETS

---



Floor Standing Cabinet

## TABLE OF CONTENTS

PRODUCT OVERVIEW ..... 2

SAFETY INSTRUCTIONS ..... 3

SPECIFICATIONS ..... 4

SHIPPING & PACKAGING ..... 5

WARRANTY ..... 5

CABINET INSTALLATION ..... 6

EQUIPMENT INSTALLATION AND SERVICING ..... 8

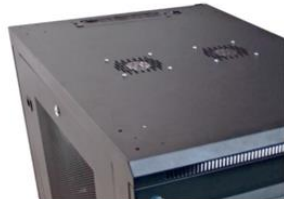
## PRODUCT OVERVIEW

Edge-Series Floor Standing Cabinets secure rackmount servers, UPS's, network switches and devices commonly found in PoE, IoT and edge-computing applications. The floor-mounting design and castors provide mobility while supporting large IT equipment. A wide range of high-density accessories allow the equipment to be installed in a compact environment and maintain proper cable and airflow management.

### Greater Capacity



Greater Equipment Mounting Depth and Load Rating



Max Airflow for High-Power Equipment

### Greater Access



360 degree Access to Equipment



Flexible Mounting Options

### Best-in-Class Organization



High Density Cable Management



0U Mounting Options

Supports Larger Equipment	110kg load rating and 850mm depth suitable for large IT equipment
Reliable Operation	Fully-assembled, welded frame provides greater support
Greater Security	Locking doors and side panels prevent unauthorized access
Maximum Organization	High density cable management for organizing network and power cables
Office-Friendly Operation	Attractive design and low-noise fans suitable for conference rooms and offices
Greater Access	360° equipment access via removable side panels and doors for simplified maintenance
Greater Airflow	High-capacity fans and isolation accessories support higher-powered equipment
Flexible Operation	Locking castors and mounting feet options to place on the floor or desktop
Greater RMU Capacity	4-post mounting rails offer front and rear equipment installation

## SAFETY INSTRUCTIONS

- Keep the enclosure in a controlled indoor environment, away from moisture, temperature extremes, flammable liquids and gasses, conductive contaminants, dust and direct sunlight.
- Leave adequate space at the front and rear of the enclosure for proper ventilation. Do not block, cover or insert objects into the external ventilation openings of the enclosure.
- The enclosure is extremely heavy. Use caution when handling the enclosure. Do not attempt to unpack, move or install it unassisted. Use a mechanical device such as a forklift or pallet jack to move the enclosure in the shipping container.
- Do not place any object on the enclosure, especially containers of liquid, and do not attempt to stack the enclosures.
- Inspect the shipping container and the enclosure for shipping damage. Do not use the enclosure if it is damaged.
- Leave the enclosure in the shipping container until it has been moved as close to the final installation location as possible.
- Install the enclosure in a structurally sound area capable of handling the load, or on a level floor that is able to bear the weight of the enclosure, all equipment that will be installed in the enclosure and any other enclosures and/or equipment that will be installed nearby.
- Use caution when cutting packing materials. The enclosure could be scratched, causing damage not covered by the warranty.
- Save all packing materials for later use. Repacking and shipping the enclosure without the original packing materials may cause product damage that will void the warranty.
- Do not reship the enclosure with additional equipment. The combined weight of the enclosure and installed equipment must not exceed the load capacity of the pallet. ArcTiv Technologies is not responsible for any damage that occurs during reshipment.
- The casters are designed for minor position adjustments within the final installation area only. The casters are not designed for moving the enclosure over longer distances.
- When rolling the enclosure on its casters, always push it from behind; never pull it toward you.
- A rolling enclosure can cause personal injury and property damage if not properly supervised. If rolling the enclosure down a ramp is required, use extreme caution. Do not attempt to use ramps that have a slope steeper than 1:12.
- Use of this equipment in life support applications where failure of this equipment can reasonably be expected to cause the failure of the life support equipment or to significantly affect its safety or effectiveness is not recommended. Do not use this equipment in the presence of a flammable anesthetic mixture with air, oxygen or nitrous oxide.

## SPECIFICATIONS

### Each Floor Standing Cabinet includes:

- Welded frame cabinet with 110kg load rating
- 2 x glass doors with full locking swing handles
- 2 vented or solid locking and removable side panels
- 4 x EIA adjustable mounting rails
- 2 x ground wires (doors)
- 2 x cable entry brush and grommet (top and bottom)
- 4 x 2" castors (2 with brake)
- Pack of 50 M6 screws and cage nuts
- Black powder coat paint (RAL9005)
- Pallet packaging
- 1-Year manufacturer's warranty

Other cabinet sizes available on request. On large orders, accessories can be factory-installed

Part Number		ATFSC6812( )	ATFSC6818( )	ATFSC6824( )		
RMU or Mounting Capacity		12	18	24		
Outer Dimensions (L x W x H) (mm)		853 x 600 x 635	853 x 600 x 972	853 x 600 x 1240		
Max Rail Depth (mm)		750	750	750		
Load Rating (kg)		110	110	110		
Unit Weight (kg)		55	64	68		
Shipping Weight (kg) – includes packaging		75	84	88		
Shipping Dimension (L x W x H) (mm)		940 x 645 x 855	940 x 645 x 1120	940 x 645 x 1390		
Mounting		Castors or feet	Castors or feet	Castors or feet		
Front & Rear Doors		Glass w swing handle	Glass w swing handle	Glass w swing handle		
Side Panels		(S) Solid (V) Vented	(S) Solid (V) Vented	(S) Solid (V) Vented		
Color		Black	Black	Black		
Certifications		CE, RoHS	CE, RoHS	CE, RoHS		
Compliance		IP 20	IP 20	IP 20		
Approvals		EIA/ECA-310-E	EIA/ECA-310-E	EIA/ECA-310-E		
Accessories	Part No.	Description	Packaging	Compatibility		
Cable Management	ATREVRING9	Revi-Ring™ Vertical D-Ring Cable Manager (9U)	Pack of 2		Order 2 Sets	
	ATREVRING12	Revi-Ring™ Vertical D-Ring Cable Manager (12U)	Pack of 2	Order 1 Set	Order 2 Sets	
	ATVLB12	Vertical Lacing Bracket (12U)	Pack of 2	X		
	ATVLB18	Vertical Lacing Bracket (18U)	Pack of 2		X	
	ATVLB24	Vertical Lacing Bracket (24U)	Pack of 2		X	
	ATHCM1	Horizontal Cable Manager, 1U	1	X	X	X
	ATHDRM1	Horizontal D-Ring Manager, 1U	1	X	X	X
	ATHBRSH1	Horizontal Brush Panel, 1U	1	X	X	X
	ATCEBRSH	Cable Entry Brush Strip	1	X	X	X
	ATCEGROM	Cable Entry Grommet	1	X	X	X
	ATHLB	Horizontal Lacing Bar	1	X	X	X
ATVELCRO	Velcro Straps	Pack of 20	X	X	X	
Airflow Management	ATLNFAN220	Low Noise Fan, 220V	Pack of 2	X	X	X
	ATSTFAN220	Standard Fan, 220V	Pack of 2	X	X	X
	ATMBLANK1	Metal Blanking Panel (1U)	1	X	X	X
	ATPBLANK1	Plastic Tool-less Blanking Panel (2U)	1	X	X	X
Other	ATLESHELF	Light Equipment Shelf	1	X	X	X
	ATFSHELF350	Fixed Shelf, 350mmD	1	X	X	X
	ATFSHELF550	Fixed Shelf, 550mmD	1	X	X	X
	ATSSHSELF350	Sliding Shelf, 350mmD	1	X	X	X
	ATSSHSELF550	Sliding Shelf, 550mmD	1	X	X	X
	ATLEDLIGHT	LED Light	1	X	X	X
	ATMTFEET	Mounting Feet	Pack of 4	X	X	X

## SHIPPING AND PACKAGING


The Floor Standing Cabinets ship fully assembled via pallet. For large orders, it may be preferred to ship in a carton with castors uninstalled in order to maximize the quantity in a shipping container.

Part No	Standard Packaging	Shipping			
		Quant per 20' Container	Quant per 40' Container	Weight (kg)	Packing (mm) (L x W x H)
ATFSC6812S	Pallet	54	111	75	940 x 645 x 855
ATFSC6812V	Pallet	54	111	75	940 x 645 x 855
ATFSC6818S	Pallet	54	111	84	940 x 645 x 1120
ATFSC6818V	Pallet	54	111	84	940 x 645 x 1120
ATFSC6824S	Pallet	54	111	88	940 x 645 x 1390
ATFSC6824V	Pallet	54	111	88	940 x 645 x 1390

Pallet Packaging



### Unpacking

**Caution** – Use at least 2 people to remove the cabinet from the pallet or carton 

1. Move shipping pallet to a firm, level surface.
2. Save all packing materials for later use unless you are certain they will not be required. Packing materials are recyclable.
3. With one person on each side, carefully lift the enclosure off of the pallet and place on a firm, level surface.
4. Examine the enclosure for any damage or loose parts. Confirm all parts are present. If anything is missing or damaged, contact ArcTiv for assistance. Do not attempt to use the enclosure if it has been damaged.

## WARRANTY

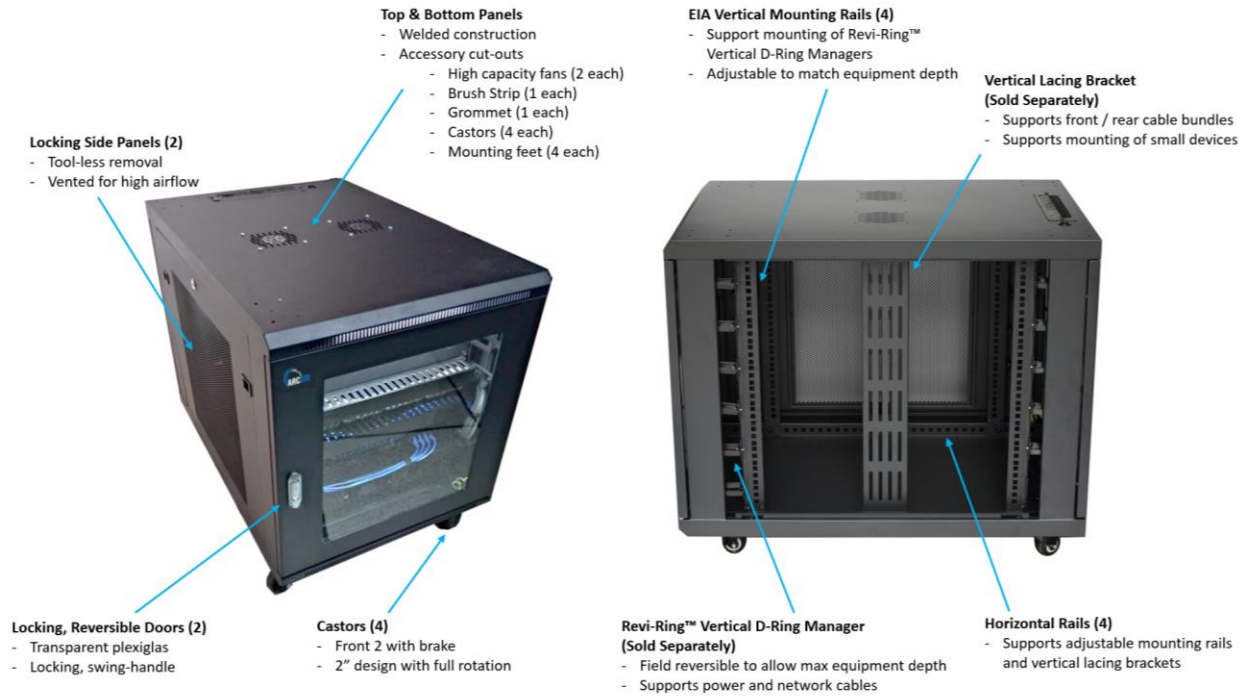
**1-Year Limited Warranty.** Seller warrants this product, if used in accordance with all applicable instructions, to be free from original defects in material and workmanship for a period of 1 year from the date of initial purchase. If the product should prove defective in material or workmanship within that period, Seller will repair or replace the product, at its sole discretion.

THIS WARRANTY DOES NOT APPLY TO NORMAL WEAR OR TO DAMAGE RESULTING FROM ACCIDENT, MISUSE, ABUSE OR NEGLIGENCE. SELLER MAKES NO EXPRESS WARRANTIES OTHER THAN THE WARRANTY EXPRESSLY SET FORTH HEREIN.

**WARNING:** The individual user should take care to determine prior to use whether this device is suitable, adequate or safe for the use intended. Since individual applications are subject to great variation, the manufacturer makes no representation or warranty as to the suitability or fitness of these devices for any specific application.

## CABINET INSTALLATION

Edge-Series Floor Standing Cabinets are welded and ship fully assembled. The figure below depicts the standard configuration with accessories installed (Revi-Ring™ Vertical D-Ring Managers, Vertical Lacing Brackets, Fan Kits).



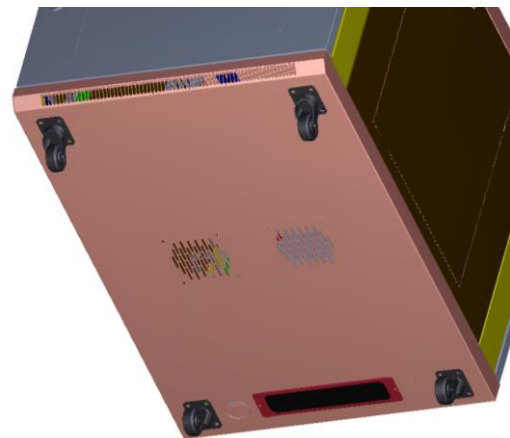
### Installing Castors (Optional)

A castor kit is included with each Floor Standing Cabinet. For pallet-style packaging, these are pre-installed at the factory. For carton packaging, a kit is included inside the cabinet. The kit includes 4 castors with required locknuts, washers and bolts for installation. Using two 10 mm open-end or combination wrenches, install the castors to the base of the unit using the pre-drilled holes near each corner of the enclosure.

### Cabinet Placement

You can use the castors to move the enclosure for a short distance over a level, smooth, stable surface by pushing it from the front or rear (not the side panels). Do not attempt to roll the enclosure over long distances. *Warning: Use appropriate equipment and follow all applicable safety procedures and regulations.*

After the enclosure has been moved to the installation location, use a carpenter's level to check the slope of the floor. If the floor slopes more than 1%, choose an alternate installation site. Locate the 2 castors on the front of the cabinet with the locking brake and secure them into place.



2" Castor with Brake



2" Castor w/o Brake

**Ground Connection**

- All parts of the enclosure are grounded to the frame of the enclosure.
- Grounding studs have been provided in all four corners of the enclosure to allow for grounding in any configuration (including front or back door reversals).
- Grounding holes are also provided on top and bottom corners of both front and back doors to accommodate any configuration.



- To ground the enclosure simply connect the two quick-disconnect grounding wires, one to the hole provided on the inside of either the front or back door and the other to the stud provided in any corner of the enclosure. Connect your facility's earth ground connection to the grounding stud not used by door connections, using an 8 AWG (3.264 mm) wire.

**Warning: Attach each enclosure to earth ground separately. Do not use the enclosure without an earth ground connection.**

**Reversing the Doors**

The doors of the enclosure are held in position on the enclosure's frame with two spring-loaded pins. To reverse the door's swing direction, simply release the pins by pulling them up (lower pin) or down (upper pin) and remove them from the mounting holes on the frame of the enclosure.

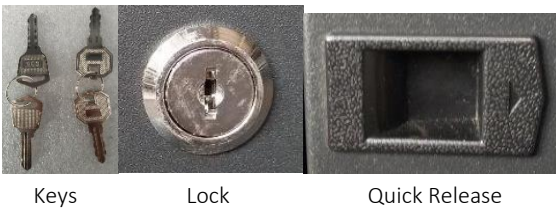
Flip the door in the opposite direction and replace the pins in the identical mounting holes on the other side of the enclosure's frame by lining them up with the mounting holes and engaging them again.

For doors with swing-lock handles, the handle will need to be removed via a screwdriver and reversed.



**Removing the Side Panels**

The side panels include a key lock and quick release on all models (vented or solid). Remove the side panel by unlocking the small round lock and pressing on the quick releases. Once removed, this will provide open access to the equipment and cables for easy servicing.



## ACCESSORY AND EQUIPMENT INSTALLATION

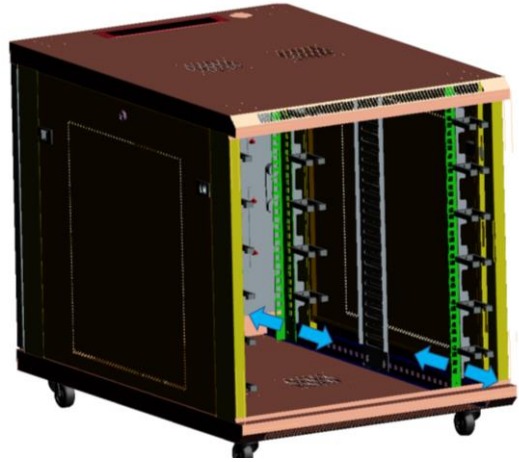
### Mounting Rail Adjustment

The cabinet includes 4 mounting rails that have square holes for mounting rack equipment. The rails are pre-installed but can be easily adjusted to match your equipment depth by the following steps:

- Each rail is connected to the enclosure with 2 screws: 1 in the upper corner and another in the lower corner. Using a Phillips-head screwdriver, remove the screws that fasten the rails to the enclosure.
- Slide the mounting rails to the desired depth and reattach them using the removed screws.

To install equipment, use the included cage nuts and other hardware.

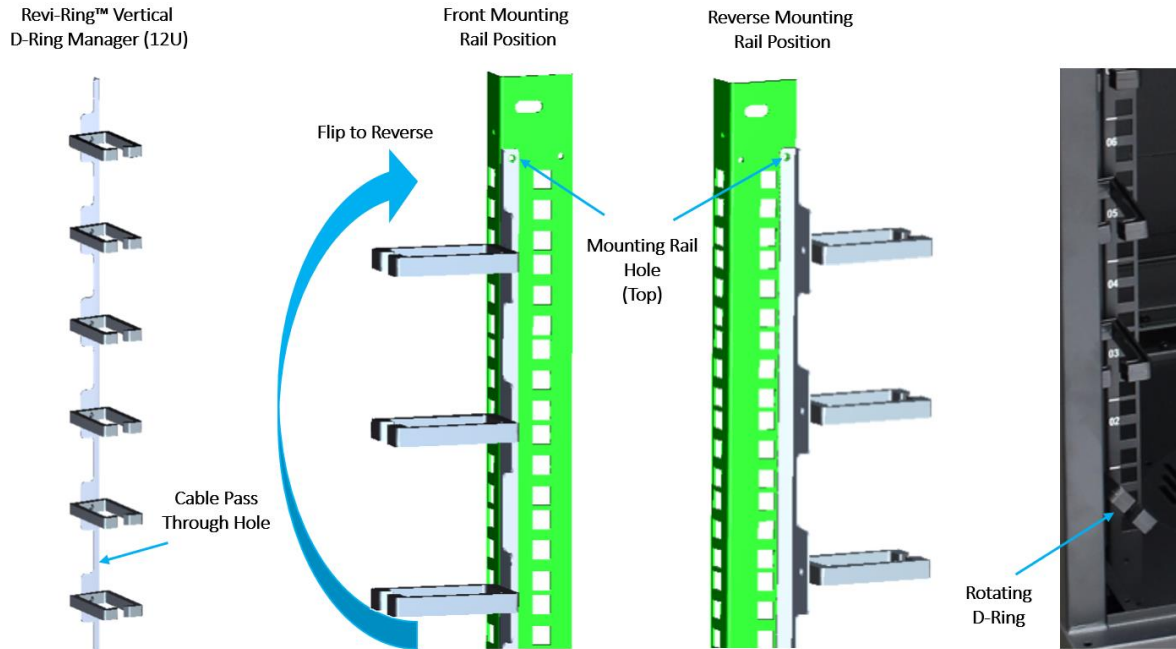
*Warning: Be sure to have the enclosure in its final position on the floor before mounting any equipment inside.*



### Revi-Ring™ Vertical D-Ring Manager Installation

ArcTiv's patented Revi-Ring™ Vertical D-Ring Managers allow for high-density organization of network and power cables in the cabinet. They attach directly to the mounting rails via 2 screws and can be reversed to allow the greatest mounting rail depth. To use the full benefit of the reversed Revi-Ring's, move the front and/or rear mounting rails to the 1<sup>st</sup> or 2<sup>nd</sup> mounting position and use a horizontal brush strip or lacing bar to support the front-side network cables. The bundle can then be routed through the Revi-Ring™ D-Ring without compromising any rack space. See the figure below on the installation process for front and reverse mounting.

The individual D-Rings can rotate in order to allow a smooth transition of cables from the horizontal manager to the vertical channel. This is easily completed by slightly loosening the mounting screw with a Philips screwdriver, rotating the D-Ring and then tightening to the desired position.





### Vertical Lacing Bar Installation

The vertical lacing bars provide strain relief for large cable bundles routed between the front and rear Revi-Ring™ Vertical Cable Managers and also a 1U mounting option for small, IT devices. The brackets connect to the horizontal rails with (4) screws and cage nuts (included).



### Fan Kit Installation

Each cabinet includes mounting provisions for low-noise or standard fan kits on both the top and bottom panels. Each fan installs with 4 mounting screws and is powered with local plug options. The power cables can be routed via the Vertical Lacing Brackets and Revi-Ring™ Vertical D-Ring Managers.



### EIA Equipment Installation

EIA equipment and accessories can be installed on both the front and back rails via cage nuts and M6 screws (included). Standard Edge-Series accessories include:

- Blanking Panels
- Horizontal D-Ring Managers
- Horizontal Cable Managers
- Horizontal Lacing Bars
- Fixed and Sliding Shelving



### Cable Entry Brush and Grommet

The cable entry brush and grommet are included with the standard models on the back side of both the top and bottom panels. To open the grommet hole, use a screw driver to open the seal and route the power or network cables. The brush strip can provide a sealed option to maintain organization and isolation.



### Mounting Feet Installation

Each cabinet includes a pack of 4 mounting feet which can be used for floor or desktop mounting. Each kit can be installed with a Philips screwdriver by removing the castors and replacing with the mounting feet.



If you have questions about this product or need technical support, please contact us or visit our website.

**ArcTiv Technologies, Ltd.**

4F., No. 12, Ln. 345, Yangguang St.,  
Neihu Dist., Taipei City 114 ,  
Taiwan (R.O.C.)  
[sales@arctiv-tech.com](mailto:sales@arctiv-tech.com)  
[www.arctiv-tech.com](http://www.arctiv-tech.com)



Copyright (c) 2021 All Rights Reserved

Latest Revision: November 1, 2021