



VERTICAL  
WALLMOUNT

FLOOR-  
STANDING



FIXED  
WALLMOUNT

SOUND-  
PROOF



# EDGE-SERIES CABINETS

STORAGE SOLUTIONS FOR EDGE DEVICES

BROCHURE

# ArcTiv Edge-Series Cabinets

## APPLICATION OVERVIEW

Office



Sound-Proof Cabinet for storing servers in offices



Floor-Standing Cabinet for ROBO applications

### Advantages

- ✓ No dedicated IT room
- ✓ Shorter cables
- ✓ Low-noise in open-offices



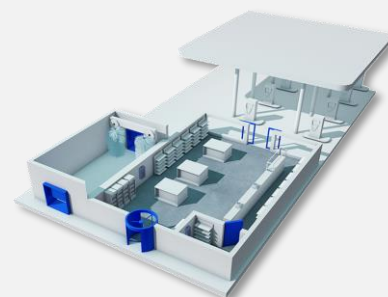
Retail



Vertical & Swing-Gate Wall Mount Cabinets can store network switches & PoS devices in back-offices

### Advantages

- ✓ Secure mounting in tight spaces
- ✓ Powering PoE devices
- ✓ Back-up power for IP camera's



Manufacturing



Fixed & Side-Mount Wall Mount Cabinets can store IIoT & networking devices in factory environments

### Advantages

- ✓ Low-latency communication
- ✓ Installing and servicing equipment
- ✓ Cabinet & system security



# ArcTiv Edge-Series Cabinets

## PRODUCT LINE OVERVIEW



### Floor-Standing Cabinets

Extra depth, load rating and castors to support larger equipment in ROBO applications



### Sound-Proof Cabinets

Sound insulation and low-noise fans provide up to 20dB equipment noise reduction



### Vertical Wall Mount Cabinets

Vertical mounting of IT equipment for applications where floor space is limited



### Swing-Gate Wall Mount Cabinets

Swing-out back gate provides rear equipment access for easy field-service of equipment



### Fixed Wall Mount Cabinets

Mount on the wall, floor or desktop for versatile, secure operation



### Side-Mount Wall Mount Cabinets

Reinforced wall mounting and greater equipment depth for larger networking equipment



# ArcTiv Floor Standing Cabinets

## PRODUCT OVERVIEW



ArcTiv Floor Standing Cabinets are suitable for remote office & branch office (ROBO) applications. They support edge-servers, rackmount UPS and networking equipment in a compact design.

Each cabinet supports:

- Cable management solutions for CAT5, fiber and power cables
- Castors and mounting feet for floor or desktop mounting



Greater Capacity

### Greater Capacity



High Depth & Load Rating

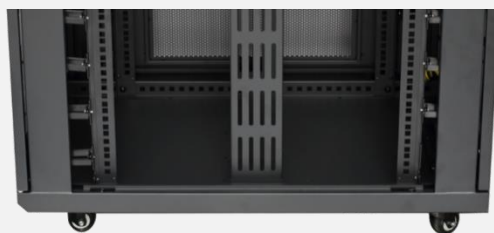


High Airflow

### Greater Access

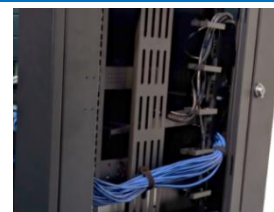


Full Equipment Access



Easy Mobility

### Organization



Cable Management



Mounting Small Devices

### Each Cabinet Includes:

- Welded frame cabinet with 110kg load rating
- 2 x glass doors with locking swing handles
- 2 locking and removable side panels
- 4 x EIA adjustable mounting rails
- 4 x 2" castors (2 with brake)
- 2 x cable entry brush and grommet
- Black powder coat paint (RAL9005)
- 50 M6 screws and cage nuts
- Pallet packaging
- 1-Year manufacturer's warranty

### Ordering Information:

Part No	Description
ATFSC6812S	12U x 600mmW x 853mmD, Solid Sides
ATFSC6812V	12U x 600mmW x 853mmD, Vented Sides
ATFSC6818S	18U x 600mmW x 853mmD, Solid Sides
ATFSC6818V	18U x 600mmW x 853mmD, Vented Sides
ATFSC6824S	24U x 600mmW x 853mmD, Solid Sides
ATFSC6824V	24U x 600mmW x 853mmD, Vented Sides

# ArcTiv Sound-Proof Cabinets

## PRODUCT OVERVIEW



ArcTiv Sound-Proof Cabinets quietly store servers, UPS's and loud IT equipment in office environments. Internal sound insulation provides up to 20dB noise reduction while the low-noise fans provide efficient cooling.

Each cabinet supports:

- Up to 20dB of noise reduction, ideal for loud IT equipment in office environments
- High capacity, low-noise fans



Low-Noise

### Quiet Operation



Up to 20dB Noise Reduction



Low-Noise Fan System

### Greater Capacity



Max Load Rating and Fan Capacity

### Office-Friendly



Furniture-Style Exterior



Removable Side Panels

### Each Cabinet Includes:

- Welded frame cabinet
- Split, locking front doors with wood finish
- Single, rear door with integrated low-noise fans
- 4 x EIA adjustable mounting rails
- 4 x Heavy-duty castors
- Cable entry brush strips
- Pack of 50 M6 screws and cage nuts
- Black powder coat paint (RAL9005)
- Pallet packaging
- 1-Year manufacturer's warranty

### Ordering Information:

Part No	Description
ATSPC7118	18U x 750mmW x 1130mmD, Fan Kit (3)
ATSPC7124	24U x 750mmW x 1130mmD, Fan Kit (6)



# ArcTiv Vertical Wall Mount Cabinets

## PRODUCT OVERVIEW



ArcTiv Vertical Wall Mount Cabinets provide low-profile mounting of large IT equipment suitable for back-office applications. Optional 2U equipment mounting brackets provide greater capacity in a compact design.

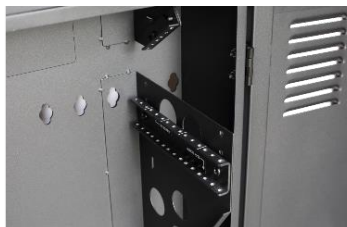
Each cabinet supports:

- Cable management solutions for CAT5, fiber and power cables
- Low-profile mounting of network switches



Low-Profile

### Low-Profile



Vertical EIA Mounting



Full Equipment Access

### Greater Capacity



Locking Door and Access Panel



High Airflow

### Organization



Cable Management



Mounting Small Devices

### Each Cabinet Includes:

- Welded frame cabinet
- 1 x locking hinged front door with top panel
- 2 x EIA adjustable mounting rails
- 2 x 2U EIA adjustable mounting rails
- 2 x 2U EIA PDU mounting rails (5U version)
- Wall mounting kit (pack of 4)
- Pack of 50 M6 screws and cage nuts
- Black powder coat paint (RAL9005)
- Carton packaging
- 1-Year manufacturer's warranty

### Ordering Information:

Part No	Description
ATVWC2E	2U x 760mmW x 890mmH
ATVWC2P	2U x 760mmW x 1235mmH
ATVWC5E	5U x 760mmW x 890mmH
ATVWC5P	5U x 760mmW x 1235mmH 2U PDU EIA Rails

# ArcTiv Swing-Gate Wall Mount Cabinets

## PRODUCT OVERVIEW



ArcTiv Swing-Gate Wall Mount Cabinets provide both front and rear access for easier service and maintenance. 2U rear mounting brackets allow installation of patch panels and horizontal PDU's.

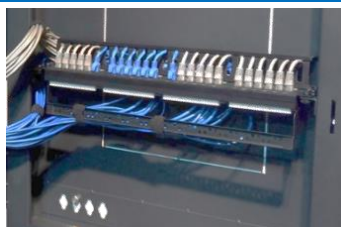
Each cabinet supports:

- Rear swing-out operation for access to IT equipment
- 2U PDU or patch panel mounting on the back gate



360° Access

### Greater Capacity



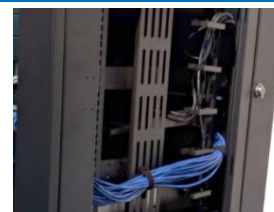
2U Rear Equipment Mounting

### Greater Access



Full Equipment Access

### Organization



Cable Management



High Airflow



Flexible Mounting



Mounting Small Devices

### Each Cabinet Includes:

- Welded frame cabinet with 90kg load rating
- Wall mounting kit (pack of 4) and ground wires
- 1 x glass door with locking swing handle
- 2 locking and removable side panels
- 4 x EIA adjustable mounting rails
- 2 x 2U EIA mounting rails (back gate)
- Black powder coat paint (RAL9005)
- 50 M6 screws and cage nuts
- Carton packaging
- 1-Year manufacturer's warranty

### Ordering Information:

Part No	Description
ATSGC6606PS	6U x 600mmW x 650mmD, Solid Sides
ATSGC6606PV	6U x 600mmW x 650mmD, Vented Sides
ATSGC6609PS	9U x 600mmW x 650mmD, Solid Sides
ATSGC6609PV	9U x 600mmW x 650mmD, Vented Sides
ATSGC6612PS	12U x 600mmW x 650mmD, Solid Sides
ATSGC6612PV	12U x 600mmW x 650mmD, Vented Sides



# ArcTiv Fixed Wall Mount Cabinets

## PRODUCT OVERVIEW



ArcTiv Fixed Wall Mount Cabinets offer flexible configurations suitable for wall, floor and desktop mounting, while including a reinforced load rating to support larger network switches and IT equipment.

Each cabinet supports:

- Flexible mounting for wall, floor or desktop
- 90kg load rating for larger IT equipment



Flexible Mounting

### Greater Capacity



High Depth & Load Rating



High Airflow

### Greater Access

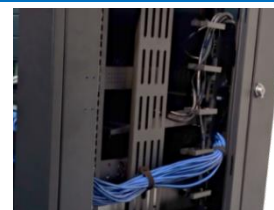


Locking Door and Side Panels



Secure Wall Mounting

### Organization



Cable Management



Mounting Small Devices

### Each Cabinet Includes:

- Welded frame cabinet with 90kg load rating
- Wall mounting kit (pack of 4) and ground wires
- 1 x glass door with locking swing handle
- 2 locking and removable side panels
- 4 x EIA adjustable mounting rails
- 2 x cable entry brush and grommet
- Black powder coat paint (RAL9005)
- 50 M6 screws and cage nuts
- Carton packaging
- 1-Year manufacturer's warranty

### Ordering Information:

Part No	Description
ATFWC6606PS	6U x 600mmW x 650mmD, Solid Sides
ATFWC6606PV	6U x 600mmW x 650mmD, Vented Sides
ATFWC6609PS	9U x 600mmW x 650mmD, Solid Sides
ATFWC6609PV	9U x 600mmW x 650mmD, Vented Sides
ATFWC6612PS	12U x 600mmW x 650mmD, Solid Sides
ATFWC6612PV	12U x 600mmW x 650mmD, Vented Sides



# ArcTiv Side-Mount Wall Mount Cabinets

## PRODUCT OVERVIEW



ArcTiv Side-Mount Wall Mount Cabinets offer the greater load capacity and equipment mounting depth for mounting larger IT equipment to the wall.

Each cabinet supports:

- Reinforced 110kg load rating and depth
- 2 doors for front and rear access



Greater Stability

### Greater Capacity



Reinforced Wall Mounting



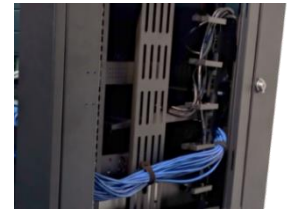
High Airflow

### Greater Access



Full Equipment Access

### Organization



Cable Management



Mounting Small Devices

### Each Cabinet Includes:

- Welded frame cabinet with 110kg load rating
- Wall mounting kit (pack of 6) and ground wires
- 2 x glass doors with locking swing handles
- 1 x locking and removable side panels
- 4 x EIA adjustable mounting rails
- 4 x 2" castors (2 with brake)
- Black powder coat paint (RAL9005)
- 50 M6 screws and cage nuts
- Carton packaging
- 1-Year manufacturer's warranty

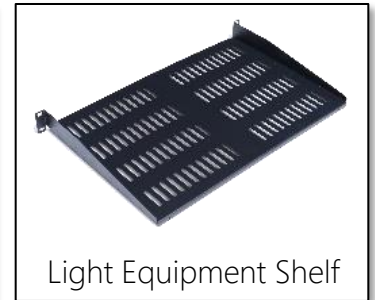
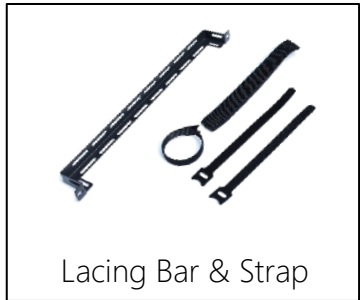
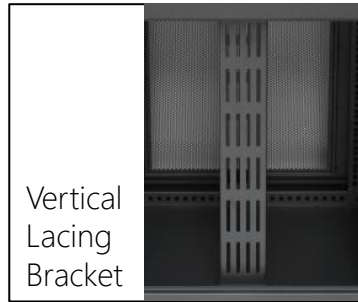
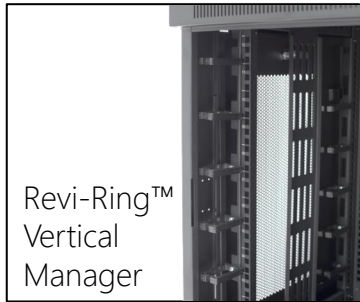
### Ordering Information:

Part No	Description
ATSMC9612S	12U x 920mmW x 625mmD, Solid Side
ATSMC9612V	12U x 920mmW x 625mmD, Vented Side
ATSMC9618S	18U x 920mmW x 625mmD, Solid Side
ATSMC9618V	18U x 920mmW x 625mmD, Vented Side



# ArcTiv Edge-Series Cabinets Accessories

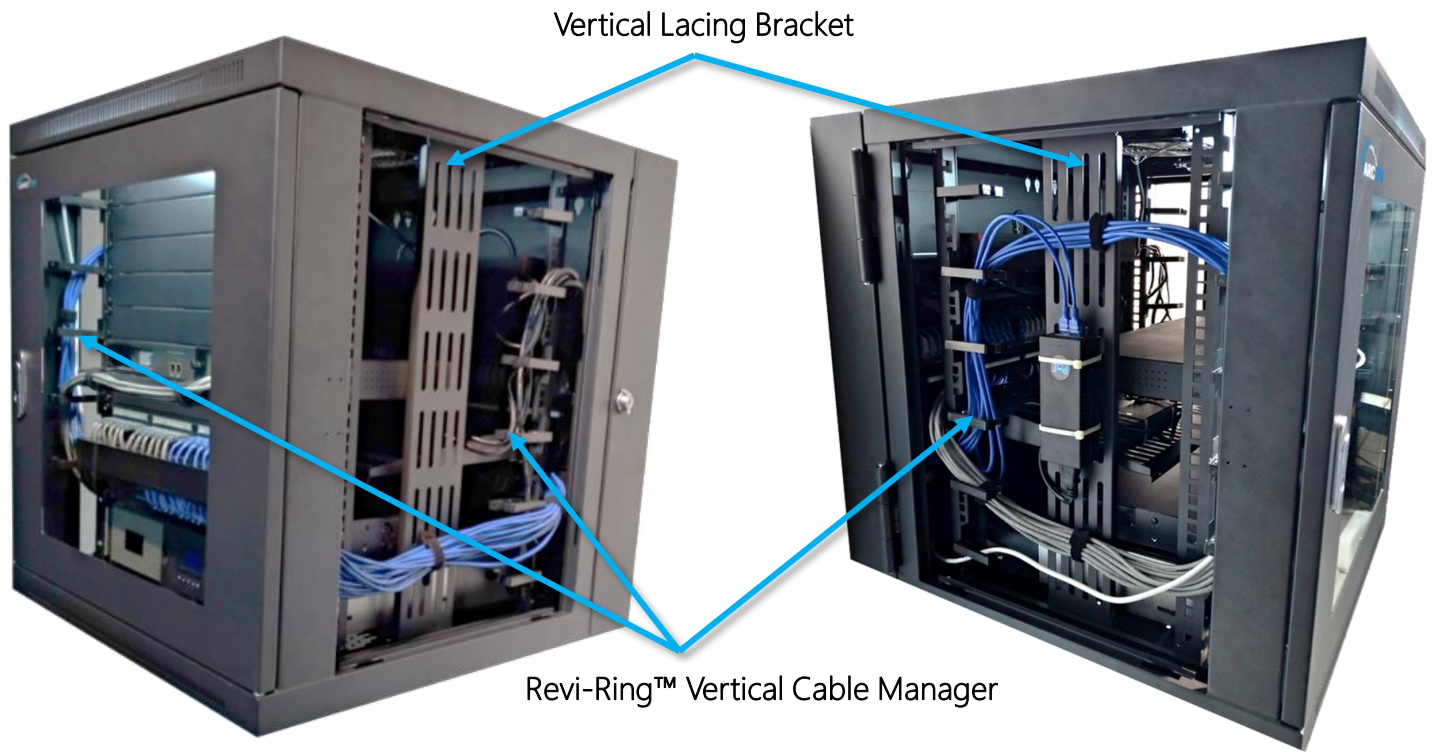
## PRODUCT OVERVIEW



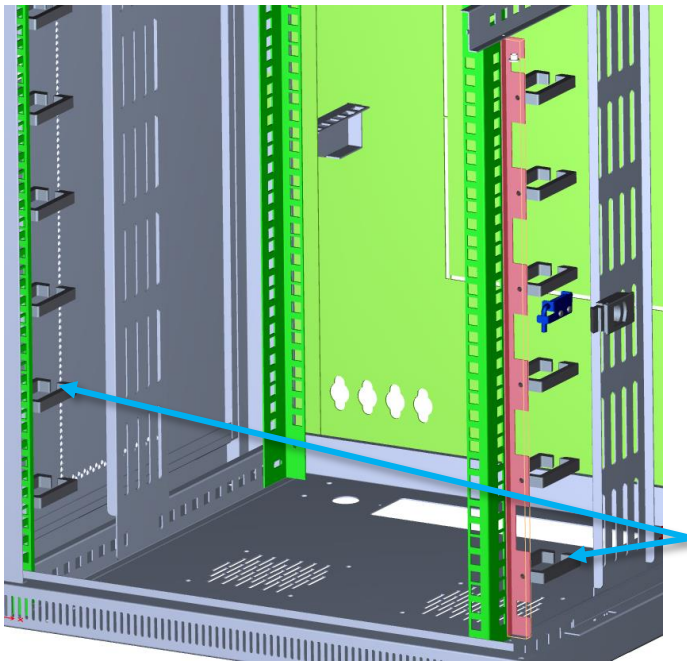
	Part No.	Description	Packaging
Cable Management	ATREVRING9	Revi-Ring Vertical Cable Manager (9U)	Pack of 2
	ATREVRING12	Revi-Ring Vertical Cable Manager (12U)	Pack of 2
	ATVLB12	Vertical Lacing Bracket (12U)	Pack of 2
	ATVLB18	Vertical Lacing Bracket (18U)	Pack of 2
	ATVLB24	Vertical Lacing Bracket (24U)	Pack of 2
	ATHCM1	Horizontal Cable Manager, 1U	1
	ATHDRM1	Horizontal D-Ring Manager, 1U	1
	ATHBRSH1	Horizontal Brush Panel, 1U	1
	ATCEBRSH	Cable Entry Brush Strip	1
	ATCEGROM	Cable Entry Grommet	1
	ATHLB	Horizontal Lacing Bar	1
	ATVELCRO	Velcro Straps	Pack of 20
Airflow	ATLNFAN220	Low Noise Fan, 220V	Pack of 2
	ATSTFAN220	Standard Fan, 220V	Pack of 2
	ATMBLANK1	Metal Blanking Panel (1U)	1
	ATPBLANK1	Plastic Tool-less Blanking Panel (2U)	1
Other	ATLESHELF	Light Equipment Shelf	1
	ATFSHELF350	Fixed Shelf, 350mmD	1
	ATFSHELF550	Fixed Shelf, 550mmD	1
	ATLEDLIGHT	LED Light	1
	AT2CASTOR	2" Castors	Pack of 4
	ATMTFEET	Mounting Feet	Pack of 4

# ArcTiv Edge-Series Cable Management

## APPLICATION OVERVIEW

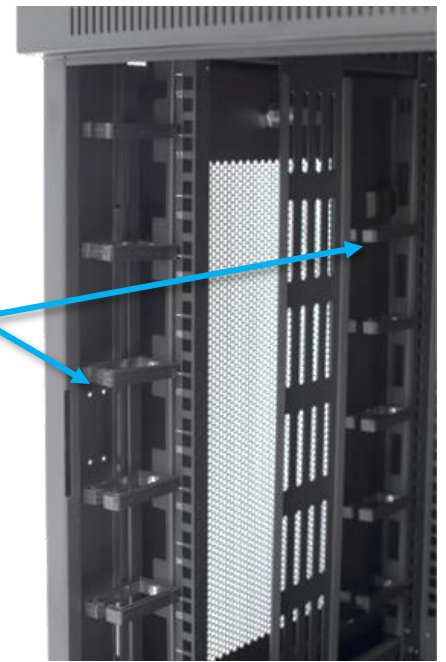


### Revi-Ring™ Vertical Cable Management



**Front & Rear Rail Mounting**  
Manage networking & power cables

**Reversible Mounting**  
Allows front EIA rails to position to the front of the rack



*On large orders, accessories can be factory-installed*





[www.arctiv-tech.com/](http://www.arctiv-tech.com/)



[sales@arctiv-tech.com](mailto:sales@arctiv-tech.com)



[facebook.com/arctivtechnologies](https://facebook.com/arctivtechnologies)



[linkedin.com/company/arctiv-technologies](https://linkedin.com/company/arctiv-technologies)



Power



Protect



Cool



Connect

ArcTiv Technologies is a global technology vendor whose mission is to **Power, Protect, Cool and Connect** your data center and edge-computing network infrastructure.

**USA Address:**

ArcTiv Technologies, LLC  
30 N Gould St Ste 22117,  
Sheridan, WY 82801  
USA  
e: [sales@arctiv-tech.com](mailto:sales@arctiv-tech.com)

**Taiwan Address:**

ArcTiv Technologies, Ltd.  
4F., No. 12, Ln. 345, Yangguang St.,  
Neihu Dist., Taipei City 114 ,  
Taiwan (R.O.C.)  
e: [james.chien@arctiv-tech.com](mailto:james.chien@arctiv-tech.com)

© 2021 ArcTiv Technologies, LLC. All rights reserved. ArcTiv and the ArcTiv logo are trademarks or registered trademarks of ArcTiv Technologies, LLC. While every precaution has been taken to ensure accuracy and completeness herein, ArcTiv Technologies LLC assumes no responsibility, and disclaims all liability, for damages resulting from use of this information or for any errors or omissions. Specifications are subject to change without notice.