



Swing Gate Wall Mount Cabinets

PRODUCT OVERVIEW

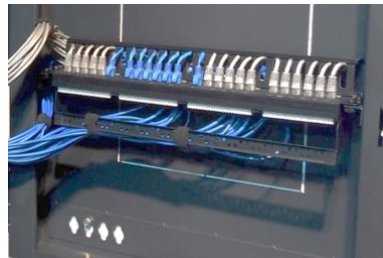
ArcTiv Swing-Gate Wall Mount Cabinets provide both front and rear access for easier service and maintenance. 2U rear mounting brackets allow installation of patch panels and horizontal PDU's. Each cabinet supports:

- High density cable management solutions for CAT5, fiber and power cables.
- Rear swing-out operation for access to IT equipment
- 2U PDU or patch panel mounting on the back gate

Benefits

Supports Larger Equipment	90kg load rating and 650mm depth suitable for large IT equipment
Reliable Operation	Fully-assembled, welded frame provides greater support
Greater Security	Locking doors and side panels prevent unauthorized access
Maximum Organization	High density cable management for organizing network and power cables
Office Friendly	Attractive design and low-noise fans suitable for conference rooms and offices
Greater Access	360° equipment access via swing gate and removable side panels for easy maintenance
Greater Airflow	High-capacity fans and isolation accessories support higher-powered equipment
Flexible Mounting	Wall mounting kit, castors and mounting feet to place on the wall, floor or desktop
Greater RMU Capacity	2U EIA mounting rails provide rear equipment installation

Greater Capacity



2U Rear Equipment Mounting

Greater Access



360° Access to Equipment

Best-in-Class Organization



Revi-Ring™ Cable Management



Max Airflow



Flexible Mounting



0U Equipment Mounting

Swing Gate Wall Mount Cabinets

SPECIFICATIONS

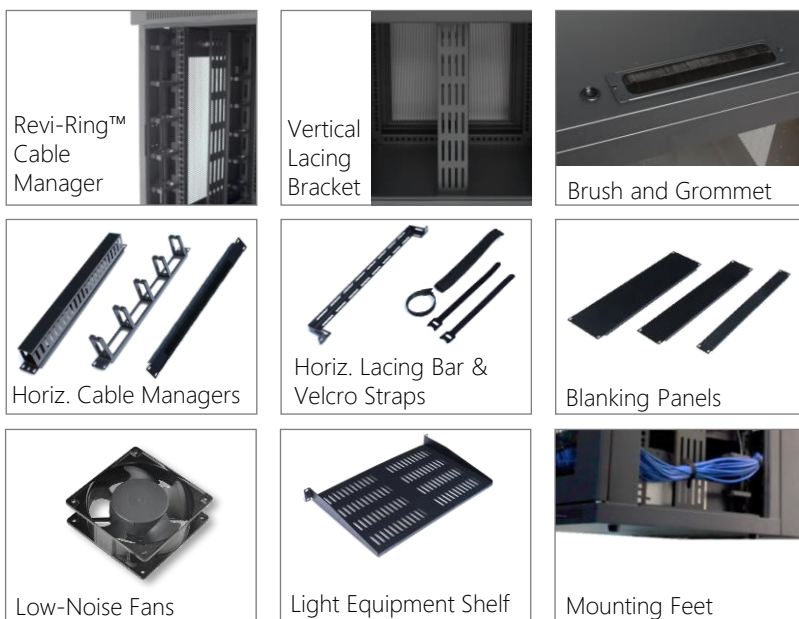
Each Swing Gate Wall Mount Cabinet Includes:

- Welded frame cabinet
- 1 x glass door with locking swing handle
- 2 locking and removable side panels
- 4 x EIA adjustable mounting rails
- 2 x 2U EIA mounting rails (back gate)
- Wall mounting kit (pack of 4) and ground wires
- Black powder coat paint (RAL9005)
- 2 x cable entry brush and grommet
- Pack of 50 M6 screws and cage nuts
- Carton packaging
- 1-Year manufacturer's warranty

Part No	Description
ATSGC6606PS	6U x 600mmW x 650mmD, 90kg, Glass Door, Solid Sides
ATSGC6606PV	6U x 600mmW x 650mmD, 90kg, Glass Door, Vented Sides
ATSGC6609PS	9U x 600mmW x 650mmD, 90kg, Glass Door, Solid Sides
ATSGC6609PV	9U x 600mmW x 650mmD, 90kg, Glass Door, Vented Sides
ATSGC6612PS	12U x 600mmW x 650mmD, 90kg, Glass Door, Solid Sides
ATSGC6612PV	12U x 600mmW x 650mmD, 90kg, Glass Door, Vented Sides

On large orders, accessories can be factory-installed

Accessories (Select Models, Ordered Separately)



	Part No.	Description	Packaging
Cable Management	ATREVRING6	Revi-Ring™ Vertical D-Ring Cable Manager (6U)	Pack of 2
	ATREVRING9	Revi-Ring™ Vertical D-Ring Cable Manager (9U)	Pack of 2
	ATREVRING12	Revi-Ring™ Vertical D-Ring Cable Manager (12U)	Pack of 2
	ATVLB6	Vertical Lacing Bracket (6U)	Pack of 2
	ATVLB9	Vertical Lacing Bracket (9U)	Pack of 2
	ATVLB12	Vertical Lacing Bracket (12U)	Pack of 2
	ATHCM1	Horizontal Cable Manager, 1U	1
	ATHBRSH1	Horizontal Brush Panel, 1U	1
	ATVELCRO	Velcro Straps	Pack of 20
Airflow	ATLNFAN220	Low Noise Fan, 220V	Pack of 2
	ATMBLANK1	Metal Blanking Panel (1U)	1
	ATPBLANK1	Plastic Tool-less Blanking Panel (2U)	1
Other	ATLESHELF	Light Equipment Shelf	1
	ATFSHELF350	Fixed Shelf, 350mmD	1
	ATFSHELF550	Fixed Shelf, 550mmD	1
	ATSSHELF350	Sliding Shelf, 350mmD	1
	ATSSHELF550	Sliding Shelf, 550mmD	1
	ATLEDLIGHT	LED Light	1
ATMTFEET	Mounting Feet	Pack of 4	