



ARCTIV™
IT Solutions Provider

www.arctiv-tech.com



Integrated Cooling



Split Cooling



In-Row Cooling

MICRO DATA CENTER RACK SOLUTIONS

Brochure

ArcTiv Technologies

Edge-Computing Solutions

YOUR DATA CENTER & IT SOLUTIONS PARTNER



ArcTiv Technologies is a global data center & IT solutions provider delivering high-performance products to **Power, Protect, Cool and Connect** your critical network infrastructure. We deliver customized, turnkey solutions to meet your data center and edge-computing application needs.

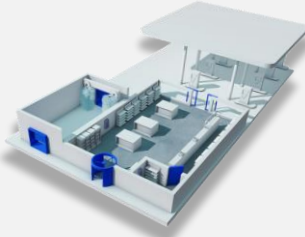
Find out more about our products and consulting services by contacting your local representative or visiting our website at:

www.arctiv-tech.com

Key Edge-Computing Applications

Branch Offices

Manage work-from-home & branch offices with edge-servers and networking systems. Safely secure the IT equipment with remote monitored rack, power and cooling solutions.



Retail

Edge technologies help to enhance security, mitigate infections and improve the customer experience while allowing IT managers to manage 1,000's of store locations.

Server Rooms

Micro Data Centers can be retro-fitted to minimize network latency & maximize bandwidth. MDC's provide remote management with minimal building modifications and installation costs.



Edge-Computing Product Line

Power



UPS & ATS

Clean power with remote monitoring for the edge



Intelligent PDU's

Remote monitoring & control for the edge

Protect



Server Racks & Cabinets

Remotely secure your edge networking systems



Access Control

Remote protection for access & system alerts

Cool



Micro Data Centers

Rack, power, cooling & monitoring for the edge



Cooling & Containment

Cooling system for room retrofits on the edge

Connect



DCIM

Management of edge power & environment



IP-Based KVM's

Remote access of edge servers

Micro Data Center Rack Solutions

Edge-Computing Application Overview

Edge-Computing in the Office



Micro Data Center Advantages

- ✓ No dedicated IT room (< CAPEX)
- ✓ Lower power & cooling costs (< OPEX)
- ✓ Can run during off-business hours
- ✓ Remote management & alarms
- ✓ Internal fire protection
- ✓ Greater equipment reliability
- ✓ Electronic access control
- ✓ Low-noise (with external condenser)

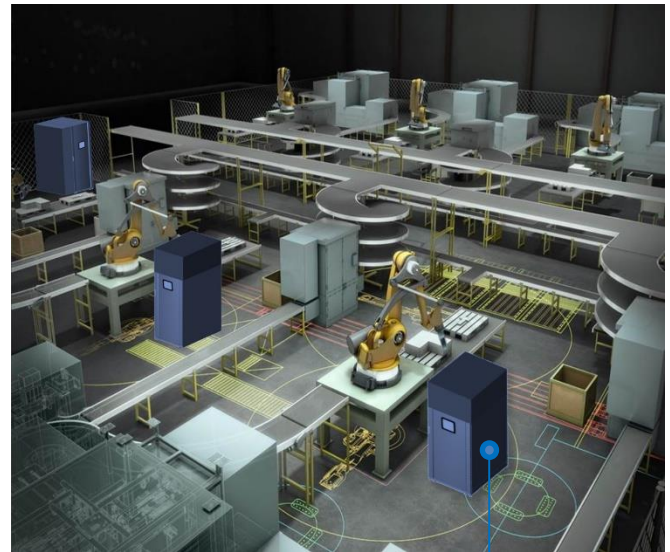
Edge-Computing in Retail



Micro Data Center Advantages

- ✓ No dedicated IT room (< CAPEX)
- ✓ Lower power & cooling costs (< OPEX)
- ✓ Protects against temperature, humidity and dust (IP5X)
- ✓ Can run during off-business hours
- ✓ Remote management & alarms
- ✓ Internal fire protection
- ✓ Greater equipment reliability
- ✓ Electronic access control & video camera monitoring

Edge-Computing in Manufacturing



Micro Data Center Advantages

- ✓ Lower cabling costs (< CAPEX)
- ✓ Lower power & cooling costs (< OPEX)
- ✓ Lower equipment latency
- ✓ Protects against temperature, humidity and dust (IP5X)
- ✓ Remote management & alarms
- ✓ No external piping required (with integrated cooling)
- ✓ Greater equipment reliability
- ✓ Electronic access control & video camera monitoring

Micro Data Center Rack Solutions

System Overview

All-in-One Power, Protect, Cool and Connect Solution for Edge-Computing Applications

<div data-bbox="159 346 263 388" data-label="Section-Header"> <h3>Power</h3> </div> <div data-bbox="397 298 527 430" data-label="Image"> </div> <div data-bbox="121 399 495 661" data-label="Image"> </div> <div data-bbox="527 409 795 682" data-label="Image"> </div> <div data-bbox="105 730 519 802" data-label="Caption"> <p>Rack-Mount UPS, Battery & Power Distribution Module (PDM)</p> </div> <div data-bbox="544 730 779 802" data-label="Caption"> <p>Power Distribution Unit (PDU)</p> </div>	<div data-bbox="873 346 993 388" data-label="Section-Header"> <h3>Protect</h3> </div> <div data-bbox="1104 298 1234 430" data-label="Image"> </div> <div data-bbox="820 409 1169 756" data-label="Image"> </div> <div data-bbox="1331 409 1404 577" data-label="Image"> </div> <div data-bbox="1258 577 1461 609" data-label="Caption"> <p>Access Control</p> </div> <div data-bbox="1193 651 1542 745" data-label="Image"> </div> <div data-bbox="1258 766 1477 802" data-label="Caption"> <p>Fire Suppression</p> </div>
<div data-bbox="108 844 279 882" data-label="Section-Header"> <h4>Key Features:</h4> </div> <ul style="list-style-type: none"> ✓ Rack-mount modular UPS (N+1 options) ✓ External batteries ✓ Surge and lightning protection ✓ Maintenance bypass ✓ Basic or managed (switched) PDU's ✓ Remote device reboot (via managed PDU) 	<div data-bbox="820 844 993 882" data-label="Section-Header"> <h4>Key Features:</h4> </div> <ul style="list-style-type: none"> ✓ IP5X for indoor & outdoor applications ✓ 600 & 800mmW with cable management ✓ Magnetic locking system ✓ Overtemperature door release ✓ 3-in-1 access control (fingerprint, RFID, PIN) ✓ Rackmount automatic fire suppression
<div data-bbox="159 1144 240 1186" data-label="Section-Header"> <h3>Cool</h3> </div> <div data-bbox="397 1102 527 1234" data-label="Image"> </div> <div data-bbox="108 1249 397 1480" data-label="Image"> </div> <div data-bbox="430 1365 698 1522" data-label="Image"> </div> <div data-bbox="625 1228 787 1396" data-label="Image"> </div> <div data-bbox="108 1549 393 1621" data-label="Caption"> <p>Integrated Cooling Unit (Top-Mount)</p> </div> <div data-bbox="451 1549 766 1621" data-label="Caption"> <p>Rack-Mount Blower With External Condenser</p> </div>	<div data-bbox="873 1144 1015 1186" data-label="Section-Header"> <h3>Connect</h3> </div> <div data-bbox="1104 1102 1234 1234" data-label="Image"> </div> <div data-bbox="828 1239 1518 1501" data-label="Diagram"> </div> <div data-bbox="1047 1549 1347 1621" data-label="Caption"> <p>Monitoring System with Remote Management</p> </div>
<div data-bbox="108 1642 279 1680" data-label="Section-Header"> <h4>Key Features:</h4> </div> <ul style="list-style-type: none"> ✓ DX-type cooling ✓ User adjustable internal temperature setting ✓ Humidity control (up to 95% non-condensing) ✓ Environmentally friendly agent (R410A) ✓ High-capacity ✓ Easy set-up 	<div data-bbox="820 1642 993 1680" data-label="Section-Header"> <h4>Key Features:</h4> </div> <ul style="list-style-type: none"> ✓ 10" HMI with built-in network controller ✓ Temperature, humidity, smoke, water & door sensors ✓ Real-time power, cooling & environmental monitoring ✓ Web access and SMS alarms ✓ Password protected ✓ Compatible with 3rd Party DCIM Systems

Micro Data Center Rack Solutions

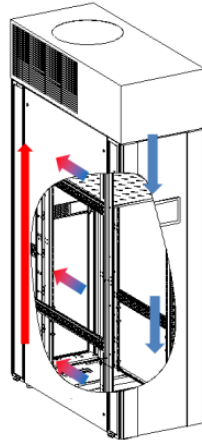
Precision Cooling System Overview

Full Range of Cooling Configurations to Support Your Edge-Computing Application

Integrated Cooling System



Top-Mount Cooling Unit with Integrated Condenser (All-in-one)



- ✓ Ideal for medium power applications (up to 5.5kW)
- ✓ Easiest to install
- ✓ High external temperature and humidity ratings
- ✓ Up to IP5X rating
- ✓ Lowest total cost (incl. installation)
- ✓ Automatic overtemperature door release

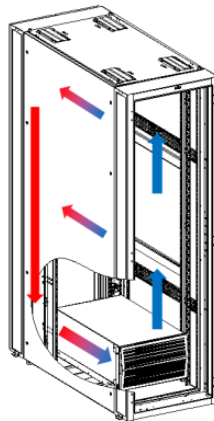
Split Cooling System



Rack-Mount Blower



External Condenser



- ✓ Ideal for medium-power applications (up to 5.0kW)
- ✓ Lowest noise & heat dissipation (ideal for offices)
- ✓ High external temperature and humidity ratings
- ✓ Up to IP5X rating
- ✓ Greater RMU capacity
- ✓ Automatic overtemperature door release

In-Row Cooling System



External Condenser



Side-Mount Blower

- ✓ Ideal for high-power applications (up to 7.6kW)
- ✓ Greatest RMU capacity
- ✓ High external temperature and humidity ratings
- ✓ Up to IP5X rating
- ✓ Automatic overtemperature door release

Micro Data Center Rack Solutions

Remote and Emergency Operation

Remote Operation

Each MDC includes an all-in-one HMI and controller which directly controls the cooling, power and sensors. The MDC is remotely accessible with the following features:

- Real-time power, cooling and environment monitoring
- System configuration
- Alarm settings & event logs
- Automatic emails during alarm events
- Electronic door release
- Password protection
- Modbus (standard) with optional SNMP converter

10" HMI & Controller



Temp, Humidity, Smoke, Water, Doors, LED Lighting

Sensors & Accessories



UPS



Cooling Unit

Remote Monitoring



Real-Time Monitoring

Alarms & System Configuration

Emergency Over-Temperature Operation

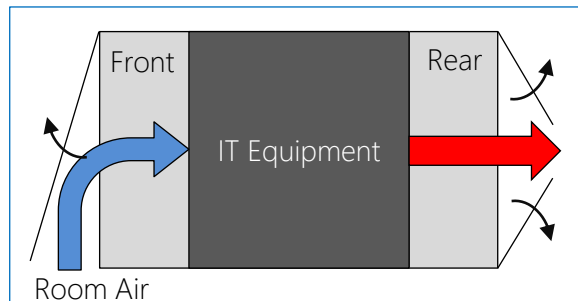
In case of an over-temperature, the electronic doors can automatically release to allow external air to enter the enclosure.

Dual-Type Door with Glass Inlet



Upgradeable front door with glass inlet and vented base. In case of over-temperature, the glass inlet will release while the vented door remains closed.

Emergency Door Operation



Micro Data Center Rack Solutions

Technical Specifications



Cooling Type	Integrated Cooling Top Mount, DX-Type	Split Cooling Rack Mount, DX-Type	In-Row Cooling Side-Mount, DX-Type
Cooling Capacity	2.5kW, 3.5kW, 5.5kW	3.9kW, 5.0kW	5.6kW, 7.6kW
Cooling Agent	R410A		
IP Rating	IP5X		
Total RMU	24, 33	42	42
Available RMU (excl. battery)	19, 26	29	35
Rack Heights	1600mm, 2100mm	2100mm	2100mm
Rack Widths	600mm, 800mm	600mm, 800mm	900mm, 1100mm
Rack Depths	1100mm, 1200mm	1100mm, 1200mm	1200mm, 1400mm
External Temp & Humid (Max)	45°C, 95% non-condensing		
UPS Capacity	3kVA, 6kVA, 10kVA	6kVA, 10kVA	10kVA
External Batteries	Optional, 2U (5-10 minutes)		
Power Distribution Module (PDM)	Maintenance Bypass, Surge Protection		
Power Distribution Unit (PDU)	Basic (optional Managed)		
Display	10" HMI with built-in network controller		
Sensors	Temp, Humid, Door (2), Smoke, Water		
Over-Temperature Protection	Automatic Door Release, Optional Dual Vented/Glass Door		
LED Lighting	Front (Blue) & Rear (Red)		
Fire Suppression	Optional, Rackmount (1U, or 3U)		
Video Monitoring	Optional, IP Camera + NVR		
Access Control	3-in-1 Access Control (RFID, Fingerprint, Passcode)		
Door Locking System	Magnetic Locks (2)		
Noise Rating @ 1M	< 60dB	< 55dB	< 65dB
Warranty	1 Year (extended available)		

Note:

- Products are engineered and built to order and can be customized to the user requirement.
- Specifications shown are recommended solutions and are subject to change without any further notification.



www.arctiv-tech.com



Power



Protect



Cool



Connect

ArcTiv Technologies is a global data center & IT solutions provider delivering high-performance products to **Power, Protect, Cool and Connect** your critical network infrastructure. We deliver customized, turnkey solutions to meet your data center and edge-computing application needs.

ArcTiv USA Address:
ArcTiv Technologies, LLC
30 N Gould St Ste R,
Sheridan, WY 82801
USA

ArcTiv Taiwan Address:
ArcTiv Technologies, Ltd.
15f., No. 159, Sec 1, Keelung Rd.,
Xinyi Dist. Taipei City, 110
Taiwan (R.O.C.)

ArcTiv Bangladesh Address:
ArcTiv Technologies, Ltd.
Plot-155/1, 156, Road No. 1, Block-A,
Section-12, Pallabi, Dhaka, PO: 1216
Bangladesh

© 2020 ArcTiv Technologies, LLC. All rights reserved. ArcTiv and the ArcTiv logo are trademarks or registered trademarks of ArcTiv Technologies, LLC. While every precaution has been taken to ensure accuracy and completeness herein, ArcTiv Technologies LLC assumes no responsibility, and disclaims all liability, for damages resulting from use of this information or for any errors or omissions. Specifications are subject to change without notice.