



Micro Data Center with In-Row Cooling & Aisle Containment

MICRO DATA CENTER AISLE & ROW SOLUTIONS

Brochure

ArcTiv Technologies

Edge-Computing Solutions

YOUR DATA CENTER & IT SOLUTIONS PARTNER



ArcTiv Technologies is a global data center & IT solutions provider delivering high-performance products to **Power, Protect, Cool and Connect** your critical network infrastructure. We deliver customized, turnkey solutions to meet your data center and edge-computing application needs.

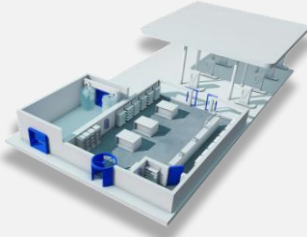
Find out more about our products and consulting services by contacting your local representative or visiting our website at:

www.arctiv-tech.com

Key Edge-Computing Applications

Branch Offices

Manage work-from-home & branch offices with edge-servers and networking systems. Safely secure the IT equipment with remote monitored rack, power and cooling solutions.



Retail

Edge technologies help to enhance security, mitigate infections and improve the customer experience while allowing IT managers to manage 1,000's of store locations.

Server Rooms

Micro Data Centers can be retro-fitted to minimize network latency & maximize bandwidth. MDC's provide remote management with minimal building modifications and installation costs.



Edge-Computing Product Line

Power



UPS & ATS

Clean power with remote monitoring for the edge



Intelligent PDU's

Remote monitoring & control for the edge

Protect



Server Racks & Cabinets

Remotely secure your edge networking systems



Access Control

Remote protection for access & system alerts

Cool



Micro Data Centers

Rack, power, cooling & monitoring for the edge



Cooling & Containment

Cooling system for room retrofits on the edge

Connect



DCIM

Management of edge power & environment



IP-Based KVM's

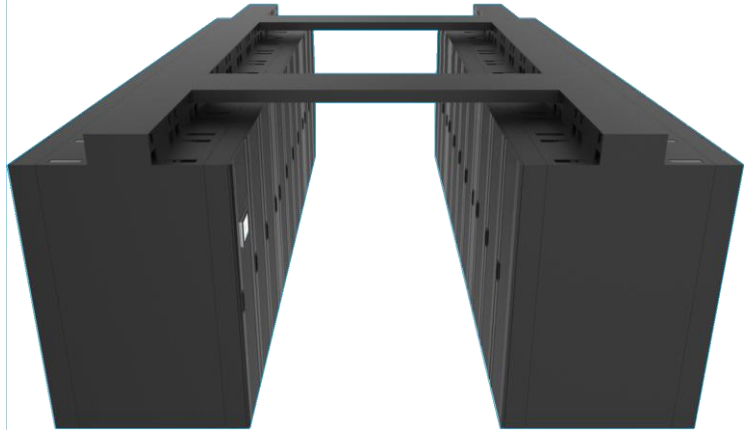
Remote access of edge servers

Micro Data Center Aisle & Row Solutions

Product Line Overview



*Micro Data Center with Aisle Containment
N+1 Power & Cooling Capacity*



*Micro Data Center with Row Cooling
N+1 Power & Cooling Capacity*

The **ArcTiv Micro Data Center Aisle & Row Solutions** are specially designed for indoor applications where room-level cooling or building modification is limited. The high-performance system is ideal for remote applications as it provides monitoring and management of the power, cooling and environmental systems. The systems are offered in N+1 power and cooling redundancy with future scalability.

Benefits	
Low Cost of Ownership	Lower total investment than room cooling & raised floor
Universal Design	Configurable for server rooms and building retrofits
Rapid Deployment	Build, deliver and commission 12 weeks from order
Customization	Engineered-to-order to meet exact application requirements
Security	Rack & containment door access control
Capacity	Maximum RMU capacity and power & cooling density
Efficiency	In-row cooling system & cold/hot air management
Remote Management	Monitoring & management portals

N+1 Power & Cooling	Remote Monitoring
 <p>In-Row Cooling System Environmentally Friendly DX-Type Cooling</p>	 <p>All-in-One Controller Network Controller and HMI with Remote Monitoring</p>
 <p>Rackmount Online UPS System Intelligent Power System with Surge Protection</p>	 <p>3-in-1 Access Control RFID, Fingerprint & PIN with system log</p>

Micro Data Center Aisle & Row Solutions

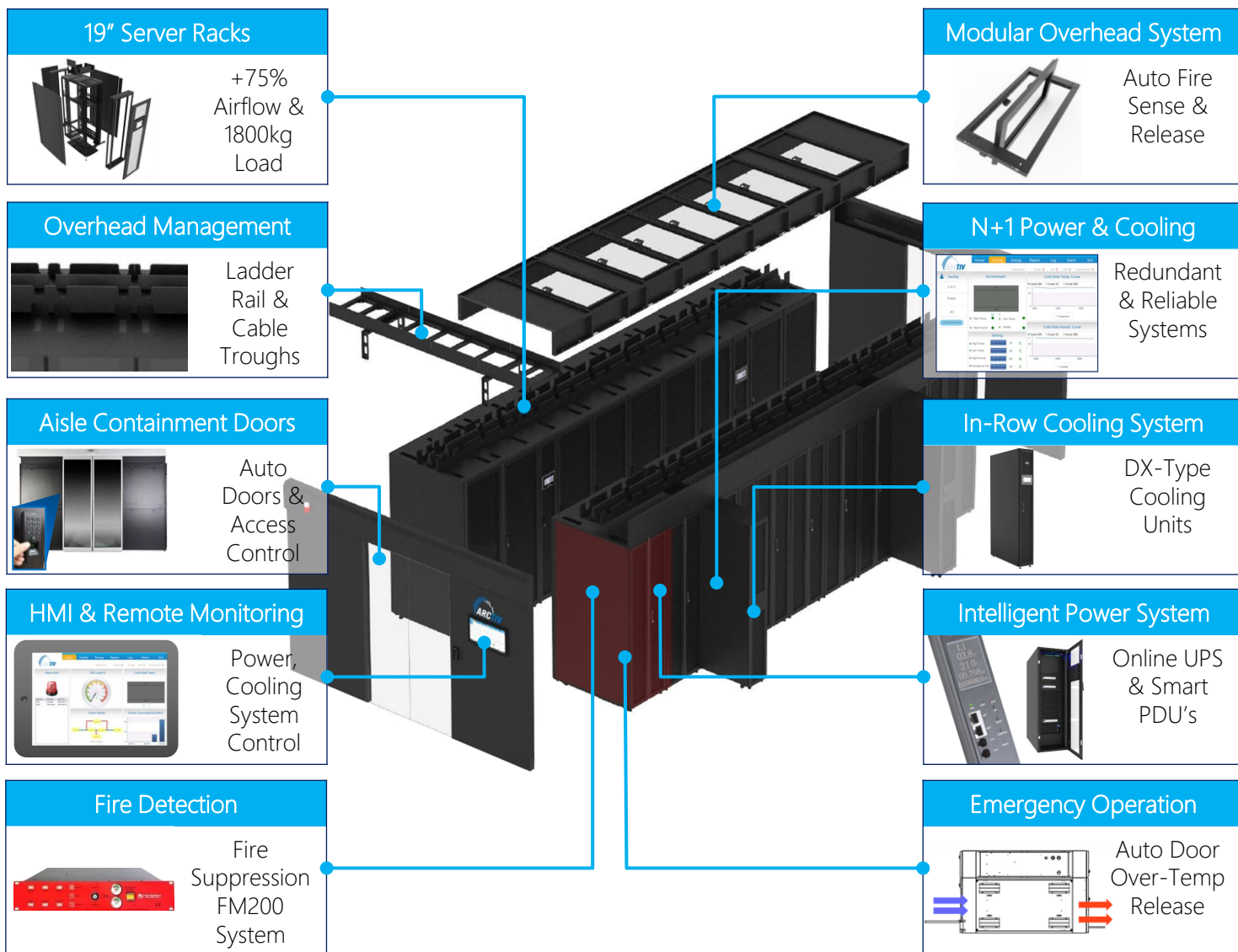
System Overview

All-in-One Power, Protect, Cool and Connect Solution for Edge-Computing Applications

<div data-bbox="159 346 263 388" data-label="Section-Header"> <h3>Power</h3> </div> <div data-bbox="397 298 527 430" data-label="Image"> </div> <div data-bbox="219 403 376 737" data-label="Image"> </div> <div data-bbox="105 747 518 821" data-label="Caption"> <p>Rack-Mount UPS, Battery & Power Distribution Module (PDM)</p> </div> <div data-bbox="519 453 799 737" data-label="Image"> </div> <div data-bbox="542 747 777 821" data-label="Caption"> <p>Power Distribution Unit (PDU)</p> </div> <div data-bbox="108 844 279 882" data-label="Section-Header"> <h4>Key Features:</h4> </div> <div data-bbox="108 879 665 1092" data-label="List-Group"> <ul style="list-style-type: none"> ✓ Rack-mount Modular UPS (N+1 options) ✓ External batteries ✓ Surge and lightning protection ✓ Maintenance bypass ✓ Basic or managed (switched) PDU's ✓ Remote device reboot (via managed PDU) </div>
<div data-bbox="868 346 992 388" data-label="Section-Header"> <h3>Protect</h3> </div> <div data-bbox="1101 298 1234 430" data-label="Image"> </div> <div data-bbox="820 409 1169 766" data-label="Image"> </div> <div data-bbox="966 785 1034 821" data-label="Caption"> <p>Rack</p> </div> <div data-bbox="1252 417 1318 577" data-label="Image"> </div> <div data-bbox="1185 577 1380 613" data-label="Caption"> <p>Access Control</p> </div> <div data-bbox="1404 453 1534 556" data-label="Image"> </div> <div data-bbox="1396 577 1549 613" data-label="Caption"> <p>IP Camera</p> </div> <div data-bbox="1185 676 1549 772" data-label="Image"> </div> <div data-bbox="1255 785 1482 823" data-label="Caption"> <p>Fire Suppression</p> </div> <div data-bbox="820 844 992 882" data-label="Section-Header"> <h4>Key Features:</h4> </div> <div data-bbox="820 879 1419 1089" data-label="List-Group"> <ul style="list-style-type: none"> ✓ IP5X for indoor applications ✓ 42U racks with overhead cable management ✓ Magnetic locking system ✓ 3-in-1 access control (fingerprint, RFID, PIN) ✓ Rackmount automatic fire suppression ✓ IP camera and NVR </div>
<div data-bbox="159 1142 240 1184" data-label="Section-Header"> <h3>Cool</h3> </div> <div data-bbox="397 1102 527 1234" data-label="Image"> </div> <div data-bbox="100 1199 232 1545" data-label="Image"> </div> <div data-bbox="180 1549 336 1619" data-label="Caption"> <p>In-Row Cooling Unit</p> </div> <div data-bbox="241 1365 389 1478" data-label="Image"> </div> <div data-bbox="427 1253 792 1522" data-label="Image"> </div> <div data-bbox="475 1545 742 1617" data-label="Caption"> <p>Cooling Management System</p> </div> <div data-bbox="108 1642 279 1680" data-label="Section-Header"> <h4>Key Features:</h4> </div> <div data-bbox="108 1677 714 1887" data-label="List-Group"> <ul style="list-style-type: none"> ✓ DX-type cooling ✓ User adjustable internal temperature setting ✓ Humidity control (up to 95% non-condensing) ✓ Environmentally friendly agent (R410A) ✓ Easy set-up (Slide-Out Cooling System) ✓ N+1 Redundancy </div>
<div data-bbox="868 1142 1013 1184" data-label="Section-Header"> <h3>Connect</h3> </div> <div data-bbox="1101 1102 1234 1234" data-label="Image"> </div> <div data-bbox="829 1239 1523 1503" data-label="Diagram"> </div> <div data-bbox="1042 1545 1347 1619" data-label="Caption"> <p>Monitoring System with Remote Management</p> </div> <div data-bbox="820 1642 992 1680" data-label="Section-Header"> <h4>Key Features:</h4> </div> <div data-bbox="820 1677 1542 1887" data-label="List-Group"> <ul style="list-style-type: none"> ✓ 10" HMI with built-in network controller ✓ Temperature, humidity, smoke, water & door sensors ✓ Real-time power, cooling & environmental monitoring ✓ Web access and SMS alarms ✓ Password protected ✓ Compatible with 3rd Party DCIM Systems </div>

Micro Data Center Aisle & Row Solutions

System Configuration



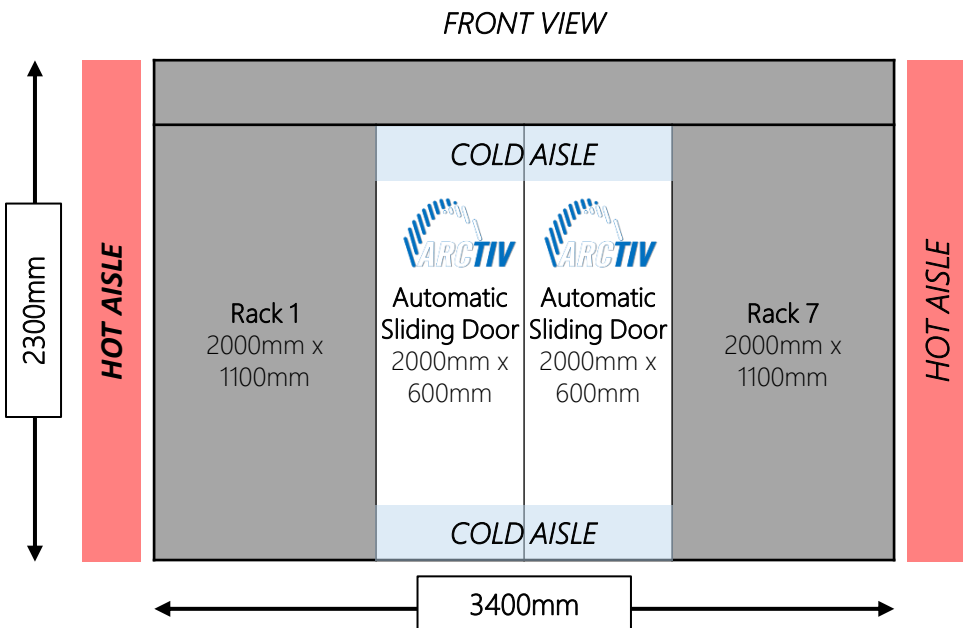
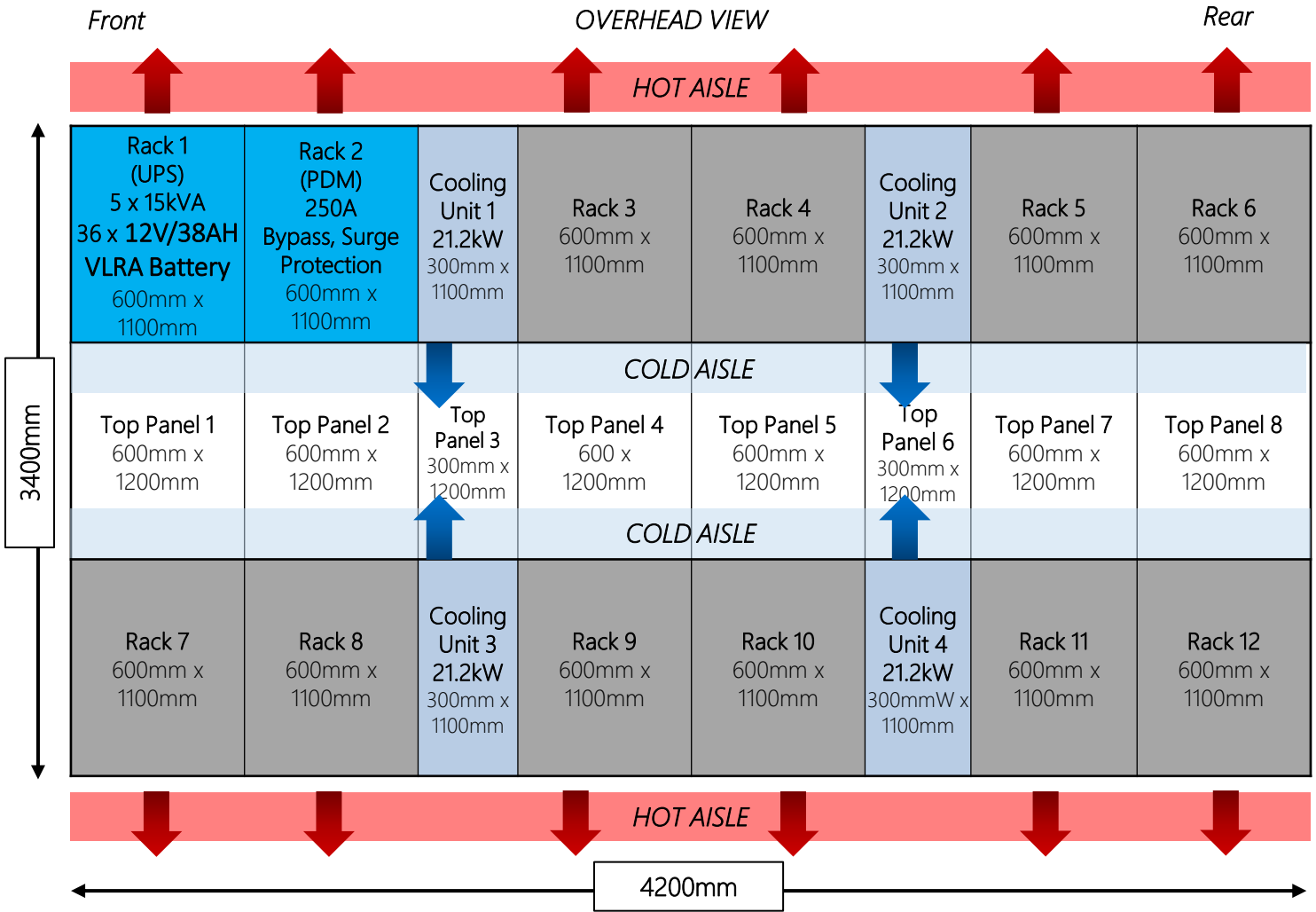
System Features

Category	Feature
Cooling	N+1 In-Row Cooling
	Temp & Humidity Controlled
	User Temp Adjustable
Physical	Auto Door Temp Release
	Scalable Racks with Containment
	Power, Cooling & Rack Customization
	In-Rack Cable Management
	High-Load & Airflow Rating Racks
	IP5X Rating
Future Expandable	

Category	Feature
Power	N+1 Modular Online UPS
	VLRA-Type UPS Battery
	Real-Time PUE Monitoring
	3 rd Party UPS & PDU Compatible
Security	Surge Protected
	3-in-1 Access Control
Management	FM200 Fire Extinguisher Agent
	All-in-One HMI
	Remote Access via DCIM
	Remote Alerts via SNMP Trap

Micro Data Center Aisle & Row Solutions

Layout & Dimensions – 12 Rack Aisle Containment Reference Design



SYSTEM CAPACITY

Power Capacity (N+1)	60kW
Cooling Capacity (N+1)	63.6kW
Available RMU	504
Back-Up Time	10 Minutes



Micro Data Center Aisle & Row Solutions

Technical Specifications – Reference Design



Parameter		ATMDCAC12
Racks	Rack Dimensions	42U x 600mmW x 1100mmD
	Rack Quantity	12
	Total Available IT Space (RMU)	504
Containment	Aisle Containment Doors	2 x Electric Sliding Doors; 1200mm Aisle Width
	Top Panels	4 x Hinged (600mmW x 1200mmD), 2 x Fixed (600mmW x 1200mmD)
	Containment System Controller	1 x Power & Control Module for Top Panel, Lighting, Smoke/Fire
Overhead Management	Top Cable Dividers	12 x 600mmW x 360mmD x 150mmH
	Ladder Rail	2 x 10' Ladder Rail (12"W)
Power	UPS Input	208V (3P) / 208V (3P), 50-60Hz
	UPS Output	5 x 15kVA (PF=1), (2U)
	UPS Redundancy	N+1
	UPS External Battery	VRLA Type: 36 x 12V/38AH (15U)
	Power Distribution Module (PDM)	Maintenance Bypass, Surge (30U)
	Power Distribution Unit (PDU)	24 x Basic (0U, 1P 32A, 20xC13, 4xC19)
Cooling	In-Row with Humidification	4 x 21.2kW, Inverter Compressor, External Condenser
	Cooling Redundancy	N+1
	Cooling Types	DX-Type, Wall Mount
Fire	Fire Detection & Suppression	2 x Rackmount (6U) Temp/Smoke Sensors, 4-8 Racks
	Fire Extinguishing Gas	FM200 Fire Suppression, Gas Volume 8kg
Monitoring	HMI	10" LCD (0U)
	Monitoring Functions	Temp, Humid, UPS, Cooling, Smoke, Water, Door
	Network Protocol	Web Portal, MODBUS SNMP via Converter
Security	Access Control	2 x 3-in-1 (RFID, Fingerprint, PIN)
	RFID Card	10
Environment	Operating Temp (Max)	45°C
	Operating Humidity	0 – 95% (Non-condensing)
Safety	Certifications	CE
	Warranty	1-Year

Note: Reference design only. Systems are customized based on project and building requirements.



www.arctiv-tech.com



Power



Protect



Cool



Connect

ArcTiv Technologies is a global data center & IT solutions provider delivering high-performance products to **Power, Protect, Cool and Connect** your critical network infrastructure. We deliver customized, turnkey solutions to meet your data center and edge-computing application needs.

ArcTiv USA Address:
ArcTiv Technologies, LLC
30 N Gould St Ste R,
Sheridan, WY 82801
USA

ArcTiv Taiwan Address:
ArcTiv Technologies, Ltd.
15f., No. 159, Sec 1, Keelung Rd.,
Xinyi Dist. Taipei City, 110
Taiwan (R.O.C.)

ArcTiv Bangladesh Address:
ArcTiv Technologies, Ltd.
Plot-155/1, 156, Road No. 1, Block-A,
Section-12, Pallabi, Dhaka, PO: 1216
Bangladesh

© 2020 ArcTiv Technologies, LLC. All rights reserved. ArcTiv and the ArcTiv logo are trademarks or registered trademarks of ArcTiv Technologies, LLC. While every precaution has been taken to ensure accuracy and completeness herein, ArcTiv Technologies LLC assumes no responsibility, and disclaims all liability, for damages resulting from use of this information or for any errors or omissions. Specifications are subject to change without notice.