



Floor Standing Cabinets

PRODUCT OVERVIEW

ArcTiv Floor Standing Cabinets are suitable for remote office & branch office (ROBO) applications. They support edge-servers, rackmount UPS and networking equipment in a compact design. Each cabinet supports:

- High density cable management solutions for CAT5, fiber and power cables.
- A wide range of cable and airflow accessories efficiently support high-capacity IT equipment.
- Castors and mounting feet for floor or desktop mounting

Benefits

Supports Larger Equipment	110kg load rating and 850mm depth suitable for large IT equipment
Reliable Operation	Fully-assembled, welded frame provides greater support
Greater Security	Locking doors and side panels prevent unauthorized access
Maximum Organization	High density cable management for organizing network and power cables
Office Friendly	Attractive design and low-noise fans suitable for conference rooms and offices
Greater Access	360° equipment access via removable side panels and doors for simplified maintenance
Greater Airflow	High-capacity fans and isolation accessories support higher-powered equipment
Flexible Mounting	Locking castors and mounting feet options to place on the floor or desktop
Greater RMU Capacity	4-post mounting rails provide front and rear equipment installation

Greater Capacity



Greater Depth and Load Rating



Max Airflow

Greater Access

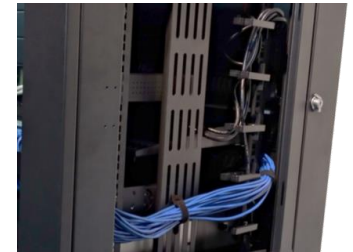


Full Access to Equipment



Easy Mobility

Best-in-Class Organization



Revi-Ring™ Cable Management



4U Equipment Mounting

Floor Standing Cabinets

SPECIFICATIONS


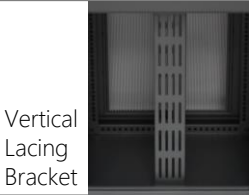





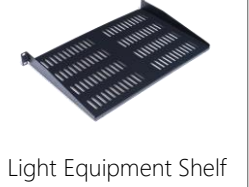
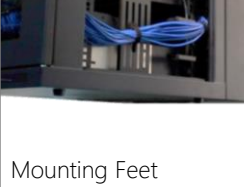
Each Floor Standing Cabinet Includes:

- Welded frame cabinet, 110kg load rating
- 2 x glass doors with locking swing handles
- 2 locking and removable side panels
- 4 x EIA adjustable mounting rails
- 2 x cable entry brush and grommet
- Black powder coat paint (RAL9005)
- 4 x 2" castors (2 with brake)
- 50 M6 screws and cage nuts
- 2 x ground wires (doors)
- Pallet packaging
- 1-Year manufacturer's warranty

Part No	Description
ATFSC6812S	12U x 600mmW x 853mmD, 110kg, Glass Doors, Solid Sides, Castors
ATFSC6812V	12U x 600mmW x 853mmD, 110kg, Glass Doors, Vented Sides, Castors
ATFSC6818S	18U x 600mmW x 853mmD, 110kg, Glass Doors, Solid Sides, Castors
ATFSC6818V	18U x 600mmW x 853mmD, 110kg, Glass Doors, Vented Sides, Castors
ATFSC6824S	24U x 600mmW x 853mmD, 110kg, Glass Doors, Solid Sides, Castors
ATFSC6824V	24U x 600mmW x 853mmD, 110kg, Glass Doors, Vented Sides, Castors

On large orders, accessories can be factory-installed

Accessories (Select Models, Ordered Separately)

 Revi-Ring™ Cable Manager	 Vertical Lacing Bracket	 Brush and Grommet
 Horiz. Cable Managers	 Horiz. Lacing Bar & Velcro Straps	 Blanking Panels
 Low-Noise Fans	 Light Equipment Shelf	 Mounting Feet

	Part No.	Description	Packaging
Cable Management	ATREVRING9	Revi-Ring™ Vertical D-Ring Cable Manager (9U)	Pack of 2
	ATREVRING12	Revi-Ring™ Vertical D-Ring Cable Manager (12U)	Pack of 2
	ATVLB12	Vertical Lacing Bracket (12U)	Pack of 2
	ATVLB18	Vertical Lacing Bracket (18U)	Pack of 2
	ATVLB24	Vertical Lacing Bracket (24U)	Pack of 2
	ATHCM1	Horizontal Cable Manager, 1U	1
	ATHDRM1	Horizontal D-Ring Manager, 1U	1
Airflow	ATHBRSH1	Horizontal Brush Panel, 1U	1
	ATVELCRO	Velcro Straps	Pack of 20
	ATLNFAN220	Low Noise Fan, 220V	Pack of 2
	ATMBLANK1	Metal Blanking Panel (1U)	1
Other	ATPBLANK1	Plastic Tool-less Blanking Panel (2U)	1
	ATLESHELF	Light Equipment Shelf	1
	ATFSHELF350	Fixed Shelf, 350mmD	1
	ATFSHELF550	Fixed Shelf, 550mmD	1
	ATSSHELF350	Sliding Shelf, 350mmD	1
	ATSSHELF550	Sliding Shelf, 550mmD	1
	ATLEDLIGHT	LED Light	1
	ATMTFEET	Mounting Feet	Pack of 4