



www.arctiv-tech.com

- CULTURE
- ECONOMIC
- FINANCE
- BUSINESS
- MEDIA
- PEOPLE
- CREATIVE
- TUTORIALS
- INVESTMENT
- NETWORKING

12010111010101001  
0010101010100101  
110101011100101011  
1101010020011011  
01110111010101010101



*Floor-Standing*



*Swing-Gate Wall Mount*



*Fixed Wall Mount*



*Side-Mount Wall Mount*



*Vertical Wall Mount*



*Sound-Proof*

# EDGE-SERIES CABINET SOLUTIONS

Brochure

# ArcTiv Technologies

## Edge-Computing Solutions

YOUR DATA  
CENTER & IT  
SOLUTIONS  
PARTNER



ArcTiv Technologies is a global data center & IT solutions provider delivering high-performance products to **Power, Protect, Cool and Connect** your critical network infrastructure. We deliver customized, turnkey solutions to meet your data center and edge-computing application needs.

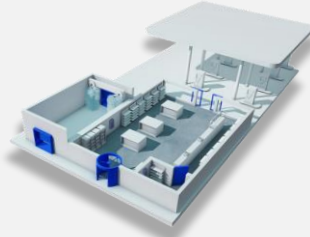
Find out more about our products and consulting services by contacting your local representative or visiting our website at:

[www.arctiv-tech.com](http://www.arctiv-tech.com)

### Key Edge-Computing Applications

#### Branch Offices

Manage work-from-home & branch offices with edge-servers and networking systems. Safely secure the IT equipment with remote monitored rack, power and cooling solutions.



#### Retail

Edge technologies help to enhance security, mitigate infections and improve the customer experience while allowing IT managers to manage 1,000's of store locations.

#### Server Rooms

Micro Data Centers can be retro-fitted to minimize network latency & maximize bandwidth. MDC's provide remote management with minimal building modifications and installation costs.



### Edge-Computing Product Line

#### Power



#### UPS & ATS

Clean power with remote monitoring for the edge



#### Intelligent PDU's

Remote monitoring & control for the edge

#### Protect



#### Server Racks & Cabinets

Remotely secure your edge networking systems



#### Access Control

Remote protection for access & system alerts

#### Cool



#### Micro Data Centers

Rack, power, cooling & monitoring for the edge



#### Cooling & Containment

Cooling system for room retrofits on the edge

#### Connect



#### DCIM

Management of edge power & environment



#### IP-Based KVM's

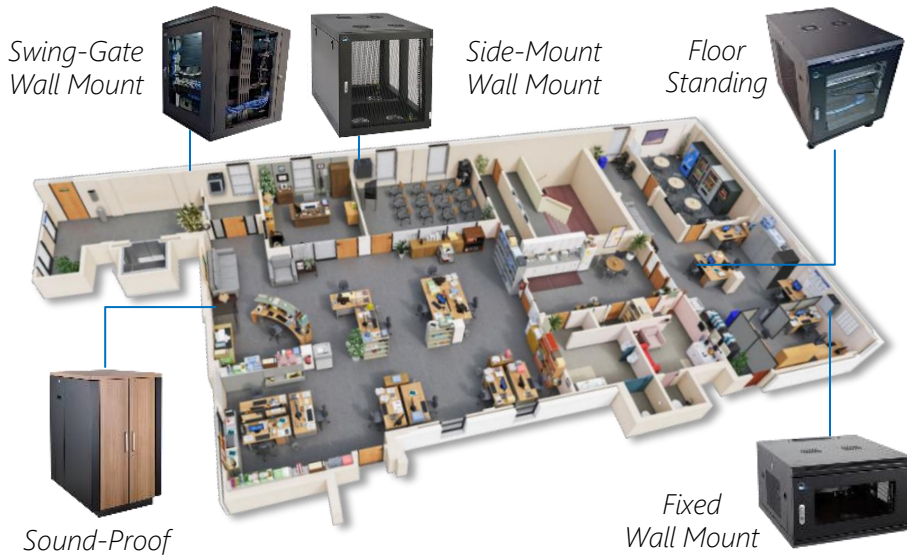
Remote access of edge servers



# Edge-Series Cabinets

## Storage Solutions for Edge Applications

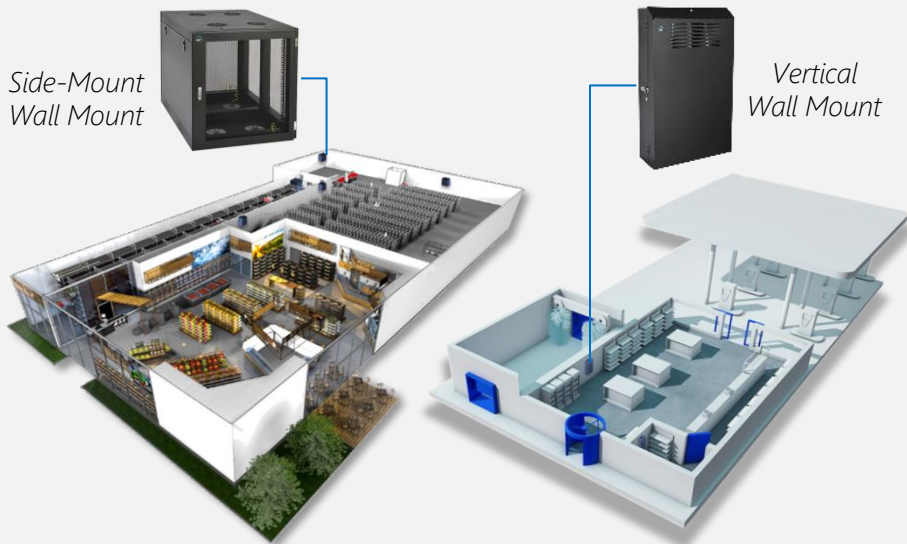
Office



### Advantages

- ✓ No dedicated IT room
- ✓ Shorter PoE cables
- ✓ Remote management & alarms
- ✓ Greater equipment access
- ✓ Electronic access control
- ✓ Low-noise (Sound-Proof Cabinet)

Retail



### Advantages

- ✓ Secure mounting & limited access
- ✓ Shorter PoE cables
- ✓ Powering PoE Devices
- ✓ Supports heavy UPS & Equipment
- ✓ Remote management & alarms
- ✓ Back-up Power for IP Camera's

Manufacturing



Swing Gate Wall Mount



Side-Mount Wall Mount



### Advantages

- ✓ Low-latency communication
- ✓ Remote management & alarms
- ✓ Power and cooling capacity
- ✓ Installing and servicing equipment
- ✓ Cabinet & system security

# Edge-Series Cabinets

## Product Line Overview

### Floor Standing Cabinets



#### Greater Capacity

Extra depth, load rating and castors to support larger equipment in office environments



### Swing-Gate Wall Mount Cabinets



#### 360° Access

Swing-out back gate provides rear equipment access



### Fixed Wall Mount Cabinets



#### Flexible Mounting

Options to mount on the wall, floor or desktop for versatile, secure operation



### Side-Mount Wall Mount Cabinets



#### Greater Stability

Reinforced wall mounting and max equipment depth for large equipment



### Vertical Wall Mount Cabinets



#### Low-Profile

Vertical mounting of large IT equipment for applications where floor space is limited



### Sound-Proof Cabinets



#### Low-Noise

Sound insulation and low-noise fans provide up to 20dB equipment noise reduction



Cabinet Style	Floor Standing	Swing Gate Wall Mount	Fixed Wall Mount	Side-Mount Wall Mount	Vertical Wall Mount	Sound Proof
RMU	12, 18, 24	6, 9, 12 [+2]	6, 9, 12	12	2, 5 [+2, +2]	18, 24
Width (mm)	600	600	600	630	760	750
Depth (mm)	853	650	650	920	890, 1235	1130
Max Equip. Depth (mm)	750	520	500	826	580, 930	900
Load Rating (kg)	110	90	90	110	68	1000
Mounting Options	Floor	Wall, Floor	Wall, Floor	Wall, Floor	Wall	Floor

# Floor Standing Cabinets

## Product Line Overview



Front View



Greater Capacity



ArcTiv Floor Standing Cabinets are suitable for remote office & branch office (ROBO) applications. They support edge-servers, rackmount UPS and networking equipment in a compact design. Each cabinet supports:

- High density cable management solutions for CAT5, fiber and power cables
- Castors and mounting feet for floor or desktop mounting

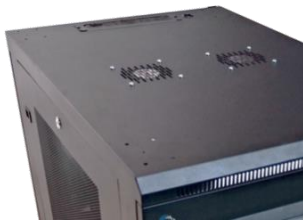
### Benefits

Capacity	110kg load rating and 850mm depth for large IT equipment
Reliability	Fully-assembled, welded frame provides greater support
Security	Locking doors and side panels prevent access
Organization	High-density cable management for power & network cables
Office Friendly	Attractive design and low-noise fans suitable for offices
Access	360° equipment access for simplified maintenance
Airflow	High-capacity fans support higher-powered equipment
Mounting	Locking castors & mounting feet options for floor or desktop
Greater RMU	4-post mounting rails provide front & rear installation

### Greater Capacity



Larger Depth & Load Rating



Max Airflow

### Greater Access



Full Equipment Access



Easy Mobility

### Best-in-Class Organization



Cable Management



0U Equipment Mounting

### Each Floor Standing Cabinet Includes:

- Welded frame cabinet with 110kg load rating
- 2 x glass doors with locking swing handles & ground wires
- 2 locking and removable side panels
- 4 x EIA adjustable mounting rails
- 4 x 2" castors (2 with brake)
- 2 x cable entry brush and grommet
- Black powder coat paint (RAL9005)
- 50 M6 screws and cage nuts
- Pallet packaging
- 1-Year manufacturer's warranty

### Ordering Information:

Part No	Description
ATFSC6812S	12U x 600mmW x 853mmD, Solid Sides
ATFSC6812V	12U x 600mmW x 853mmD, Vented Sides
ATFSC6818S	18U x 600mmW x 853mmD, Solid Sides
ATFSC6818V	18U x 600mmW x 853mmD, Vented Sides
ATFSC6824S	24U x 600mmW x 853mmD, Solid Sides
ATFSC6824V	24U x 600mmW x 853mmD, Vented Sides



# Swing-Gate Wall Mount Cabinets

## Product Line Overview



Front View



360° Access



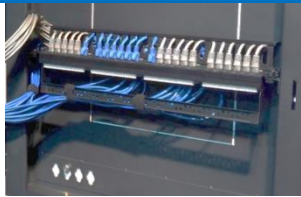
ArcTiv Swing-Gate Wall Mount Cabinets provide both front and rear access for easier service and maintenance. 2U rear mounting brackets allow installation of patch panels and horizontal PDU's. Each cabinet supports:

- Rear swing-out operation for access to IT equipment
- 2U PDU or patch panel mounting on the back gate

### Benefits

Capacity	90kg load rating and 650mm depth for large IT equipment
Reliability	Fully-assembled, welded frame provides greater support
Security	Locking doors and side panels prevent access
Organization	High-density cable management for power & network cables
Office Friendly	Attractive design and low-noise fans suitable for offices
Access	360° equipment access for simplified maintenance
Airflow	High-capacity fans support higher-powered equipment
Mounting	Wall mount kit, castors & feet to place on the wall, floor or desktop
Greater RMU	2U EIA mounting rails provide rear equipment installation

### Greater Capacity



2U Rear Equipment Mounting



Max Airflow

### Greater Access



Full Equipment Access



Flexible Mounting

### Best-in-Class Organization



Cable Management



0U Equipment Mounting

### Each Swing-Gate Wall Mount Cabinet Includes:

- Welded frame cabinet with 90kg load rating
- Wall mounting kit (pack of 4) and ground wires
- 1 x glass door with locking swing handle
- 2 locking and removable side panels
- 4 x EIA adjustable mounting rails
- 2 x 2U EIA mounting rails (back gate)
- 2 x cable entry brush and grommet
- Black powder coat paint (RAL9005)
- 50 M6 screws and cage nuts
- Carton packaging
- 1-Year manufacturer's warranty

### Ordering Information:

Part No	Description
ATSGC6606PS	6U x 600mmW x 650mmD, Solid Sides
ATSGC6606PV	6U x 600mmW x 650mmD, Vented Sides
ATSGC6609PS	9U x 600mmW x 650mmD, Solid Sides
ATSGC6609PV	9U x 600mmW x 650mmD, Vented Sides
ATSGC6612PS	12U x 600mmW x 650mmD, Solid Sides
ATSGC6612PV	12U x 600mmW x 650mmD, Vented Sides

# Fixed Wall Mount Cabinets

## Product Line Overview



Front View



Flexible Mounting



ArcTiv Fixed Wall Mount Cabinets offer flexible configurations suitable for wall, floor and desktop mounting, while including a reinforced load rating to support larger network switches and IT equipment. Each cabinet supports:

- Flexible mounting for wall, floor or desktop
- 90kg load rating for larger IT equipment

### Benefits

Capacity	90kg load rating and 650mm depth for large IT equipment
Reliability	Fully-assembled, welded frame provides greater support
Security	Locking doors and side panels prevent access
Organization	High-density cable management for power & network cables
Office Friendly	Attractive design and low-noise fans suitable for offices
Access	Removable side panels & doors for simplified maintenance
Airflow	High-capacity fans support higher-powered equipment
Mounting	Wall mount kit, castors & feet to place on the wall, floor or desktop
Greater RMU	0U device mounting for small equipment

### Greater Capacity



Larger Depth & Load Rating



Max Airflow

### Security

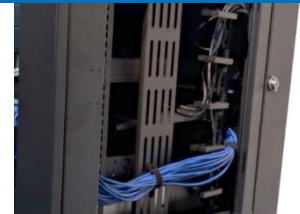


Locking Door and Side Panels



Secure Wall Mounting

### Best-in-Class Organization



Cable Management



0U Equipment Mounting

### Each Fixed Wall Mount Cabinet Includes:

- Welded frame cabinet with 90kg load rating
- Wall mounting kit (pack of 4) and ground wires
- 1 x glass door with locking swing handle
- 2 locking and removable side panels
- 4 x EIA adjustable mounting rails
- 2 x cable entry brush and grommet
- Black powder coat paint (RAL9005)
- 50 M6 screws and cage nuts
- Carton packaging
- 1-Year manufacturer's warranty

### Ordering Information:

Part No	Description
ATFWC6606PS	6U x 600mmW x 650mmD, Solid Sides
ATFWC6606PV	6U x 600mmW x 650mmD, Vented Sides
ATFWC6609PS	9U x 600mmW x 650mmD, Solid Sides
ATFWC6609PV	9U x 600mmW x 650mmD, Vented Sides
ATFWC6612PS	12U x 600mmW x 650mmD, Solid Sides
ATFWC6612PV	12U x 600mmW x 650mmD, Vented Sides

# Side-Mount Wall Mount Cabinets

## Product Line Overview



Front View



Greater  
Stability



ArcTiv Side-Mount Wall Mount Cabinets offer the greater load capacity and equipment mounting depth for mounting larger IT equipment to the wall. Each cabinet supports:

- Reinforced 110kg load rating and depth
- 2 doors for front and rear access

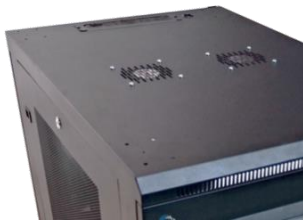
### Benefits

Capacity	110kg load rating and 920mm depth for large IT equipment
Reliability	Fully-assembled, welded frame provides greater support
Security	Locking doors and side panel prevent access
Organization	High-density cable management for power & network cables
Office Friendly	Attractive design and low-noise fans suitable for offices
Access	Removable side panels & doors for simplified maintenance
Airflow	High-capacity fans support higher-powered equipment
Mounting	Wall mount kit, castors & feet to place on the wall, floor or desktop
Greater RMU	0U device mounting for small equipment

### Greater Capacity



Larger Depth & Load Rating



Max Airflow

### Greater Access

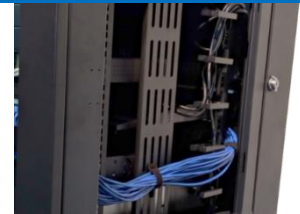


Full Equipment Access



Easy Mobility

### Best-in-Class Organization



Cable Management



0U Equipment Mounting

### Each Side-Mount Wall Mount Cabinet Includes:

- Welded frame cabinet with 110kg load rating
- Wall mounting kit (pack of 6) and ground wires
- 2 x glass doors with locking swing handles & ground wires
- 1 x locking and removable side panels
- 4 x EIA adjustable mounting rails
- 4 x 2" castors (2 with brake)
- 2 x cable entry brush and grommet
- Black powder coat paint (RAL9005)
- 50 M6 screws and cage nuts
- Carton packaging
- 1-Year manufacturer's warranty

### Ordering Information:

Part No	Description
ATSMC9612S	12U x 920mmW x 625mmD, Solid Side
ATSMC9612V	12U x 920mmW x 625mmD, Vented Side
ATSMC9618S	18U x 920mmW x 625mmD, Solid Side
ATSMC9618V	18U x 920mmW x 625mmD, Vented Side



# Vertical Wall Mount Cabinets

## Product Line Overview



Front View



Low-Profile



ArcTiv Vertical Wall Mount Cabinets provide low-profile mounting of large IT equipment suitable for back-office applications. Optional 2U equipment mounting brackets provide greater capacity in a compact design. Each cabinet supports:

- High density cable management solutions for CAT5, fiber and power cables
- Low-profile mounting ideal for UPS & network switches in office environments

### Benefits

Capacity	68kg load rating and 914mm depth for large IT equipment
Reliability	Fully-assembled, welded frame provides greater support
Security	Locking door and access panel prevent access
Organization	High-density cable management for power & network cables
Office Friendly	Attractive design and low-noise fans suitable for offices
Access	Full swing door and access panel for simplified maintenance
Airflow	High-capacity fans support higher-powered equipment
Mounting	Low-profile wall mount design suitable for confined spaces
Greater RMU	2U EIA brackets for patch panels (top) and PDU mounting (bottom)

Low-Profile	Greater Capacity	Best-in-Class Organization
 <p>Vertical EIA Mounting</p>	 <p>Locking Door and Access Panel</p>	 <p>Cable Management</p>
 <p>Full Equipment Access</p>	 <p>Max Airflow</p>	 <p>0U Equipment Mounting</p>

### Vertical Wall Mount Cabinets Include:

- Welded frame cabinet
- 1 x locking hinged front door with locking top access panel
- 2 x EIA adjustable mounting rails
- 2 x 2U EIA adjustable patch panel mounting rails
- 2 x 2U EIA PDU mounting rails (5U extended version)
- Wall mounting kit (pack of 4) and ground wires
- Cable management lacing loops
- Pack of 50 M6 screws and cage nuts
- Black powder coat paint (RAL9005)
- Carton packaging
- 1-Year manufacturer's warranty

### Ordering Information:

Part No	Description
ATVWC2E	2U x 760mmW x 890mmH
ATVWC2P	2U x 760mmW x 1235mmH
ATVWC5E	5U x 760mmW x 890mmH
ATVWC5P	5U x 760mmW x 1235mmH 2U PDU EIA Rails

# Sound-Proof Cabinets

## Product Line Overview



Front View



Low-Noise








ArcTiv Sound-Proof Cabinets quietly store servers, UPS's and loud IT equipment in office environments. Internal sound insulation provides up to 20dB noise reduction while the low-noise fans provide efficient cooling. Each cabinet supports:

- Up to 20dB of noise reduction, ideal for loud IT equipment in office environment
- High capacity, low-noise fans

### Benefits

Capacity	1000kg load rating and 1130mm depth for large IT equipment
Reliability	Fully-assembled, welded frame provides greater support
Security	Locking doors and side panels prevent access
Organization	High-density cable management for power & network cables
Office Friendly	Attractive design and low-noise fans suitable for offices
Access	Removable side panels and doors for simplified maintenance
Airflow	High-capacity fans support higher-powered equipment
Mounting	Locking, heavy-duty castors can be wheeled in office locations
Greater RMU	4-post mounting rails provide front & rear installation

Quiet Operation	Greater Capacity	Office-Friendly
 <p>Up to 20dB Noise Reduction</p>  <p>Low-Noise Fan System</p>	 <p>Max Load Rating and Fan Capacity</p>	 <p>Furniture-Style Exterior</p>  <p>Removable Panels for Rear Access</p>

### Each Sound-Proof Cabinet Includes:

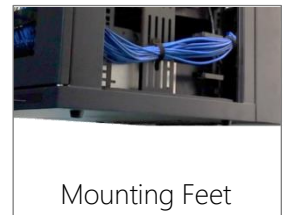
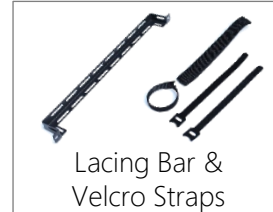
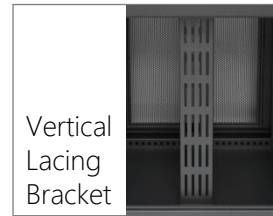
- Welded frame cabinet
- Split, locking front doors
- Single, rear door with integrated low-noise fans
- 4 x EIA adjustable mounting rails
- 4 x Heavy-duty castors
- 2 x PDU mounting brackets
- Cable entry brush strips
- Pack of 50 M6 screws and cage nuts
- Black powder coat paint (RAL9005) with wood finish
- Pallet packaging
- 1-Year manufacturer's warranty

### Ordering Information:

Part No	Description
ATSPC7118	18U x 750mmW x 1130mmD, Low-Noise Fan Kit (3)
ATSPC7124	24U x 750mmW x 1130mmD, Low-Noise Fan Kit (6)

# Edge-Series Cabinet Accessories

## Product Line Overview



On large orders, accessories can be factory-installed

Part No.		Description	Packaging	Floor Standing	Swing Gate Wall Mount	Fixed Wall Mount	Side-Mount Wall Mount	Vertical Wall Mount	Sound Proof
Cable Management	ATREVRING9	Revi-Ring Vertical Cable Manager (9U)	Pack of 2	●	●	●	●		
	ATREVRING12	Revi-Ring Vertical Cable Manager (12U)	Pack of 2	●	●	●	●		
	ATVLB12	Vertical Lacing Bracket (12U)	Pack of 2	●	●	●	●		
	ATVLB18	Vertical Lacing Bracket (18U)	Pack of 2	●			●		
	ATVLB24	Vertical Lacing Bracket (24U)	Pack of 2	●					●
	ATHCM1	Horizontal Cable Manager, 1U	1	●	●	●	●	●	●
	ATHDRM1	Horizontal D-Ring Manager, 1U	1	●	●	●	●	●	●
	ATHBRSH1	Horizontal Brush Panel, 1U	1	●	●	●	●	●	●
	ATCEBRSH	Cable Entry Brush Strip	1	●	●	●	●	●	●
	ATCEGROM	Cable Entry Grommet	1	●	●	●	●	●	●
	ATHLB	Horizontal Lacing Bar	1	●	●	●	●	●	●
	ATVELCRO	Velcro Straps	Pack of 20	●	●	●	●	●	●
Airflow	ATLNFAN220	Low Noise Fan, 220V	Pack of 2	●	●	●	●	●	●
	ATSTFAN220	Standard Fan, 220V	Pack of 2	●	●	●	●	●	
	ATMBLANK1	Metal Blanking Panel (1U)	1	●	●	●	●		●
	ATPBLANK1	Plastic Tool-less Blanking Panel (2U)	1	●	●	●	●		●
Other	ATLESHELF	Light Equipment Shelf	1	●	●	●	●	●	●
	ATFSHELF350	Fixed Shelf, 350mmD	1	●	●	●	●	●	●
	ATFSHELF550	Fixed Shelf, 550mmD	1	●	●	●	●	●	●
	ATSSHELF350	Sliding Shelf, 350mmD	1	●	●	●	●		●
	ATSSHELF550	Sliding Shelf, 550mmD	1	●	●	●	●		●
	ATLEDLIGHT	LED Light	1	●	●	●	●	●	●
	AT2CASTOR	2" Castors	Pack of 4	●	●	●	●		●
ATMTFEET	Mounting Feet	Pack of 4	●	●	●	●			



