

Cloud-Series Server Racks

Product Overview



Front View

[Cloud-Series Server Racks](#) offer a high-quality and secure design which minimizes installation time and reduces costs while serving as the foundation of a complete data center infrastructure solution. Highlights include:

- Pathways for cable integration at the top and bottom of the enclosure to accommodate large connectors and cable loops
- Options to configure mounting rails, PDU's, doors, side panels, cable management and airflow management solutions
- High-capacity airflow and load ratings for maximum network equipment reliability

Benefits

Supports Larger Equipment	1500kg load rating and up to 1200mm depth suitable for large IT equipment
Reliable Operation	Fully-assembled, semi-welded frame provides greater support
Greater Security	Locking doors and side panels prevent unauthorized access
Maximum Organization	High density vertical cable management for organizing network and power cables
Office Friendly	Attractive, curved-door design for large data centers or small office applications
Greater Access	360° equipment access via removable side panels and doors for simplified maintenance
Greater Airflow	High-capacity fans and +75% perforated doors support higher-powered equipment
Flexible Operation	Locking castors and mounting feet can easily transport. Easy assemble flat pack options.
Greater RMU Capacity	4-post mounting rails provide front and rear equipment installation

Best-in-Class Organization



Removable, split side panels for greater equipment access



High-density vertical cable managers with front and rear mounting



Fully assembled and pre-configured for fast installation



Rear 0U PDU mounting brackets and cable channel



Server Rack

Specifications



Rear View

Each Server Rack Includes:

- Welded & bolted frame cabinet with 1500kg load rating (SPCC)
- 1 x high-flow vented front door with locking swing handle
- 2 x split rear vented doors with locking swing handle
- 1 x vented top panel with cable entry holes
- 4 x solid, locking and removable split side panels
- 4 x EIA adjustable mounting rails
- 2 x PDU mounting brackets
- 4 heavy duty castors and leveling feet
- Pack of 50 M6 screws and cage nuts
- Black powder coat paint (RAL9005)
- Pallet packaging (assembled) or carton (flat pack)
- 1-Year manufacturer's warranty

Ordering Information

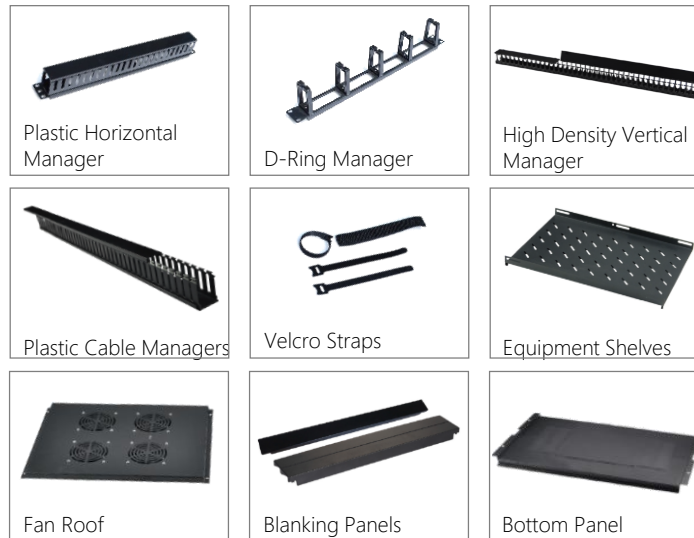
ATSVR	Server Rack
[W]	Width [6=600, 7=750, 8=800mmW]
[D]	Depth [8=800, 1=1070, 2=1200mmD]
[H]	Height [42=42U, 45=45U, 48=48U]
[LR]	Load Rating [P=1500, E=1000kg]

Example:

ATSVR6142P = 42U x 600mmW x 1070mmD Server Rack, 1500kg, Split Side Panels, Castors, Black

On large orders, accessories can be factory-installed

Accessories (Select Models, Ordered Separately)



Part No	Description
SWATCABLEDUCT1U	Plastic Horizontal Cable Manager, 1U
SWATPCABLERING1U	Horizontal D-Ring Manager, 1U
SWATVELCRO	Velcro Straps
SWATSRHDVCM42	High Density Vertical Cable Manager
SWATVCM421U	Vertical Cable Manager (42U, 1U)
SWATVCM422U	Vertical Cable Manager (42U, 2U)
SWATSRFROOF68	Fan Roof (4, 600mmW, 800mmD)
SWATSRFROOF61	Fan Roof (6, 600mmW, 1000mmD)
SWATSRFROOF88	Fan Roof (6, 800mmW, 800mmD)
SWATSRFROOF81	Fan Roof (6, 800mmW, 1000mmD)
SWATSRBPANEL68	Bottom Panel (600mmW, 800mmD)
SWATSRBPANEL61	Bottom Panel (600mmW, 1000mmD)
SWATSRBPANEL88	Bottom Panel (800mmW, 800mmD)
SWATSRBPANEL81	Bottom Panel (800mmW, 1000mmD)
SWATP2UPANELB	Plastic Tool-less Blanking Panel (2U)
SWATSHELF4P-550	Fixed Shelf, 550mmD
SWATSSHELF-550	Sliding Shelf, 550mmD