



# Edge-Series Swing Gate Wall Mount Cabinets

360° Access

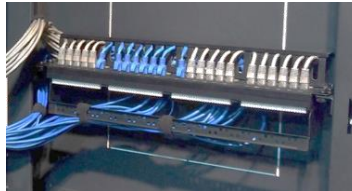
[The Edge-Series Swing Gate Wall Mount Cabinets](#) support small servers, network switches, A/V equipment and devices commonly found in PoE, IoT and edge-computing applications. A full range of high-density accessories allow the maximum amount of equipment to be installed in a compact environment while maintaining proper cable and airflow management.



## Benefits

Supports Larger Equipment	90kg load rating and 650mm depth suitable for large IT equipment
Reliable Operation	Fully-assembled, welded frame provides greater support
Greater Security	Locking doors and side panels prevent unauthorized access
Maximum Organization	High density cable management for organizing network and power cables
Office Friendly	Attractive design and low-noise fans suitable for conference rooms and offices
Greater Access	360° equipment access via swing gate and removable side panels for easy maintenance
Greater Airflow	High-capacity fans and isolation accessories support higher-powered equipment
Flexible Mounting	Wall mounting kit, castors and mounting feet to place on the wall, floor or desktop
Greater RMU Capacity	4-post mounting rails and rear 2U mounting provide front and rear equipment installation

## Greater Capacity



2U Swing-Gate Equipment Mounting



Max Airflow for High-Power Equipment

## Greater Access

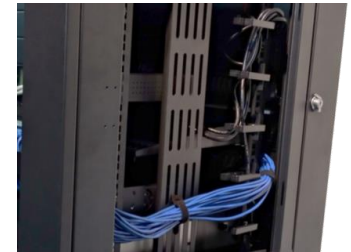


360° Access to Equipment



Flexible Mounting Options

## Best-in-Class Organization



Revi-Ring™ Cable Management



0U Equipment Mounting



# Swing-Gate Wall Mount Cabinets

## Specifications



### Cabinets

Part No.	Description
ATSGC6606PS	Swing Gate Wall Mount Cabinet, 6U x 600mmW x 650mmD, 90kg, Glass Door, Solid Sides
ATSGC6606PV	Swing Gate Wall Mount Cabinet, 6U x 600mmW x 650mmD, 90kg, Glass Door, Vented Sides
ATSGC6609PS	Swing Gate Wall Mount Cabinet, 9U x 600mmW x 650mmD, 90kg, Glass Door, Solid Sides
ATSGC6609PV	Swing Gate Wall Mount Cabinet, 9U x 600mmW x 650mmD, 90kg, Glass Door, Vented Sides
ATSGC6612PS	Swing Gate Wall Mount Cabinet, 12U x 600mmW x 650mmD, 90kg, Glass Door, Solid Sides
ATSGC6612PV	Swing Gate Wall Mount Cabinet, 12U x 600mmW x 650mmD, 90kg, Glass Door, Vented Sides

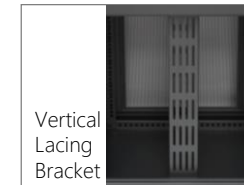
- Welded frame cabinet with 90kg load rating
- 1 x glass door with full locking swing handle
- 2 vented or solid locking and removable side panels
- 4 x EIA adjustable mounting rails
- 2 x 2U EIA mounting rails (back gate)
- Wall mounting kit (pack of 4) and ground wires
- 2 x cable entry brush and grommet (top and bottom)
- Pack of 50 M6 screws and cage nuts
- Black powder coat paint (RAL9005)
- Carton packaging
- 1-Year manufacturer's warranty

### Accessories

	Part No.	Description	Packaging	ATSGC6606P()	ATSGC6609P()	ATSGC6612P()
Cable Management	ATREVRING6	Revi-Ring™ Vertical D-Ring Cable Manager (6U)	Pack of 2	1 Set		
	ATREVRING9	Revi-Ring™ Vertical D-Ring Cable Manager (9U)	Pack of 2		1 Set	
	ATREVRING12	Revi-Ring™ Vertical D-Ring Cable Manager (12U)	Pack of 2			1 Set
	ATVLB6	Vertical Lacing Bracket (6U)	Pack of 2	•		
	ATVLB9	Vertical Lacing Bracket (9U)	Pack of 2		•	
	ATVLB12	Vertical Lacing Bracket (12U)	Pack of 2			•
	ATHCM1	Horizontal Cable Manager, 1U	1	•	•	•
	ATHDRM1	Horizontal D-Ring Manager, 1U	1	•	•	•
	ATHBRSH1	Horizontal Brush Panel, 1U	1	•	•	•
	ATCEBRSH	Cable Entry Brush Strip	1	Included	Included	Included
	ATCEGROM	Cable Entry Grommet	1	Included	Included	Included
	ATHLB	Horizontal Lacing Bar	1	•	•	•
ATVELCRO	Velcro Straps	Pack of 20	•	•	•	
Airflow	ATLNFAN220	Low Noise Fan, 220V	Pack of 2	•	•	•
	ATSTFAN220	Standard Fan, 220V	Pack of 2	•	•	•
	ATMBLANK1	Metal Blanking Panel (1U)	1	•	•	•
Other	ATPBLANK1	Plastic Tool-less Blanking Panel (2U)	1	•	•	•
	ATLESHELF	Light Equipment Shelf	1	•	•	•
	ATFSHELF350	Fixed Shelf, 350mmD	1	•	•	•
	ATFSHELF550	Fixed Shelf, 550mmD	1	•	•	•
	ATSSHELF350	Sliding Shelf, 350mmD	1	•	•	•
	ATSSHELF550	Sliding Shelf, 550mmD	1	•	•	•
	ATLEDLIGHT	LED Light	1	•	•	•
	AT2CASTOR	2" Castors	Pack of 4	•	•	•
	ATMTFEET	Mounting Feet	Pack of 4	•	•	•



Revi-Ring™



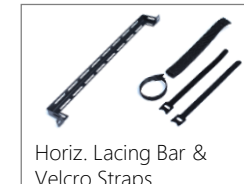
Vertical Lacing Bracket



Brush and Grommet



Horiz. Cable Managers



Horiz. Lacing Bar & Velcro Straps



Blanking Panels



Low-Noise Fans



Light Equipment Shelf



Mounting Feet